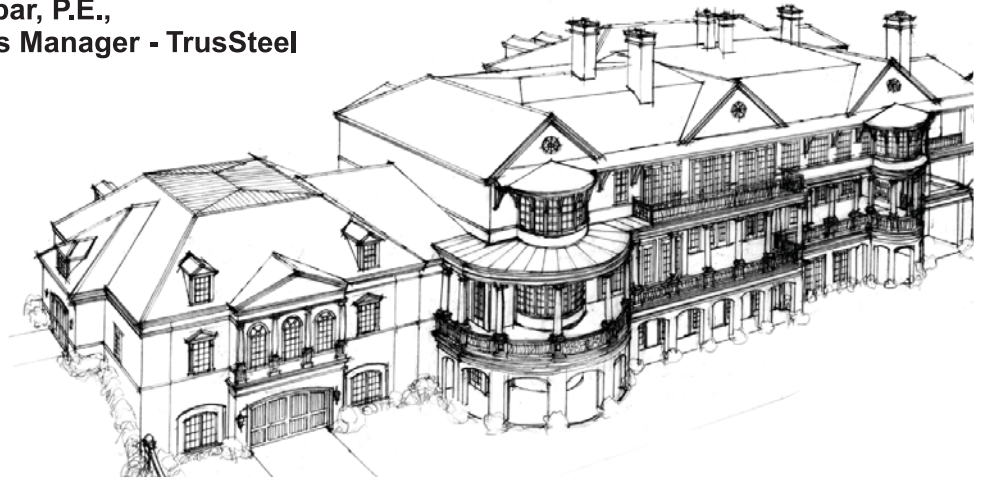




TrusSteel Comes Full Circle

**By Dave Dunbar, P.E.,
National Sales Manager - TrusSteel**

Dave has spent his entire career in the truss industry, the past 21 years promoting and managing the TrusSteel product line for Alpine. He holds a bachelor's degree in Civil Engineering from Virginia Tech and an MBA from the University of Delaware.



It may come as a surprise that TrusSteel was initially developed for residential steel framing since the product is currently recognized as the premier cold-formed steel truss system in light commercial construction. Yet when it came time to build the 9th biggest house in America, TrusSteel was a perfect fit. The house is a massive 70,000 square feet. (Total air conditioned space is 61,408 square feet. Total covered space is 70,640 square feet.) The home is built on a 188-acre thoroughbred farm in Springfield, Missouri.

Cascade Manufacturing Company built the trusses for the home. According to Tim Noonan, President of Cascade, TrusSteel trusses were built and shipped from both their Cascade, Iowa and Tyler, Texas plants. The last of the trusses were shipped at the end of 2016.

The Federalist style home includes a twelve car garage. The space also contains a golf simulator, a race car simulator, game room, movie theater, an indoor swimming pool, steam room, sauna, fitness center, locker rooms, a bowling alley, gun

room, gun range, and a 6,000 square foot wine cave! The three story building has two elevators and three stairways. The master suite has his-and-her bathrooms, dressing rooms and closets with an adjoining laundry room. Six different guest suites all include a bedroom, bathroom, living room, dining room and a kitchenette.

The two-story porch, as seen below, shows six free standing columns. The columns are twenty-eight feet tall and have main column shafts that are made from a single piece of marble. The shafts are believed to be the tallest ever made from a single piece of stone.

