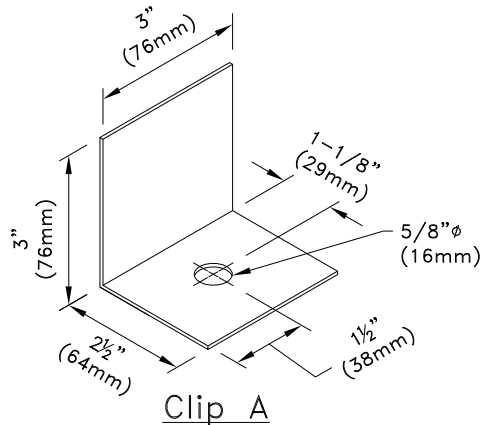
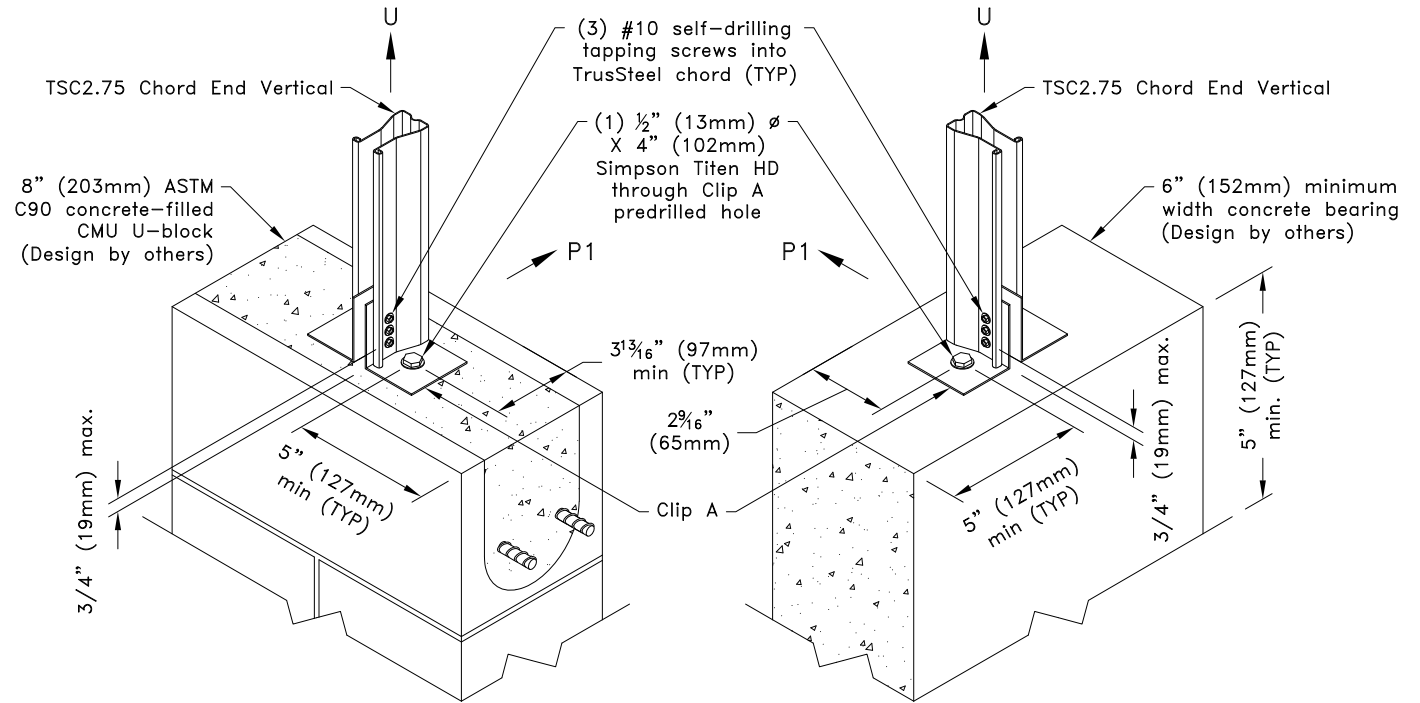


Allowable Loads - lbs (kN) ^{A,B}		
f'c of concrete psi (MPa)	Allowable Loads	12g Clip
		TSC2.75 Chord Clip on Both Faces
2500 (17.24)	U	1170 (5.20)
	P ₁	660 (2.94)
3000 (20.68)	U	1300 (5.79)
	P ₁	660 (2.94)
4000 (27.58)	U	1500 (6.67)
	P ₁	660 (2.94)
5000 (34.47)	U	1670 (7.43)
	P ₁	660 (2.94)

Allowable Loads - lbs (kN) ^{A,B}		
f'c of concrete psi (MPa)	Allowable Loads	16g Clip
		TSC2.75 Chord Clip on Both Faces
2500 (17.24)	U	960 (4.27)
	P ₁	660 (2.94)

- A. Allowable loads shown on this detail are not in combination.
 B. Design values are for cracked or uncracked concrete.



16 ga ASTM A653 SS Grade 33 G60
 Bare metal thickness, t = 0.0538" (1.37mm)
 or
 12 ga ASTM A653 SS Grade 33 G60
 Bare metal thickness, t = 0.0966" (2.45mm)

General Notes:

- Attachment of second clip on opposite face of chord is identical to what is detailed.
- This detail is for 1-Ply or 2-Ply truss only, for 3-Ply trusses contact a TrusSteel engineer.
- #10SDS Screw end distance and edge distance is 9/32" (7.14mm) minimum. Screw spacing is 9/16" (14.3mm) minimum.
- Special inspection is required. For proper installation of Titen HD fasteners and requirements of special inspection, refer to ICC ESR-2713 (September, 2021).
- It is the responsibility of the building designer to verify that the structural support members are designed for all applicable loads including (but not limited to) the loads given on this detail.
- Allowable loads shown are for use with normal weight concrete.
- Cold-Formed Steel calculations are per the 2020 supplement to AISI 1616 "North American Specification for the Design of Cold-Formed Steel Structural Members" (S100-16/S2-20).



www.TrusSteel.com

155 Harlem Ave., North Building, 4th Floor / Glenview, IL 60025 / (800) 755-6001

TSC2.75 Chord End Vertical Uplift Attachment To Concrete Bearing

Alpine, a division of ITW Building Components Group, Inc. shall not be responsible for any performance failure in a connection due to a deviation from this detail. Any variation from this detail shall be approved in advance by Alpine, a division of ITW Building Components Group, Inc.

Standard Detail:

TS077

Date:

06/01/22

TrusSteel Detail Category:

Truss-To-Bearing: Concrete