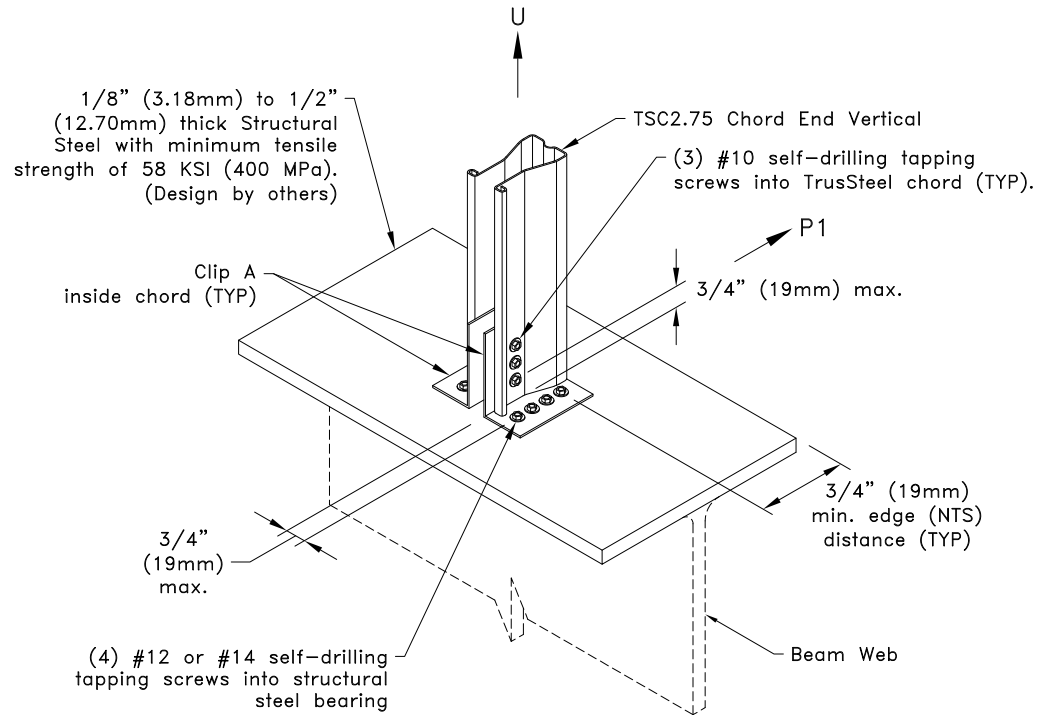


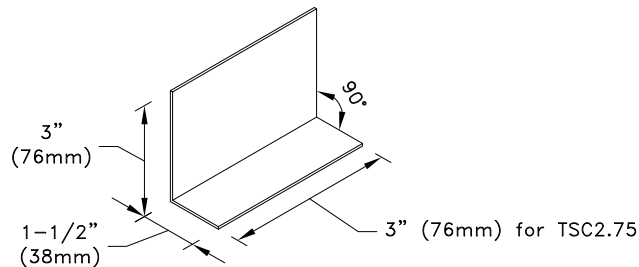
Allowable Loads lbs (kN) <sup>A</sup>		
Chord	Clip on both faces	
	U	P1
28TSC2.75	1990 (8.85)	660 (2.94)
33TSC2.75	2030 (9.03)	750 (3.34)
43TSC2.75	2030 (9.03)	760 (3.38)

A. Allowable loads shown are not in combination.



**General Notes:**

1. This detail is for 1-Ply or 2-Ply truss only, for 3-Ply trusses contact a TrusSteel engineer.
2. Clip is required on both faces, attach the second clip to the opposite face of the chord as detailed.
3. #10SDS Screw end distance and edge distance is 9/32" (7mm) minimum. #10SDS Screw spacing is 9/16" (14mm) minimum.
4. #12SDS & #14SDS Screw end distance and edge distance is 3/8" (10mm) minimum. #12SDS & #14SDS Screw spacing is 3/4" (19mm) minimum.
5. Do not overdrive screws. Overdriven screws may strip out TrusSteel chord.
6. Do not drive screws into area of beam flange directly above beam web.
7. To select proper self-drilling tapping screw for structural steel thickness refer to screw manufacturer's recommendations. Refer to manufacturer's specification and code approval regarding proper installation of #12 or #14 self-drilling tapping screws into steel thickness shown above.
8. Cold-Formed Steel calculations are per the 2020 supplement to AISI 2016 "North American Specification for the Design of Cold-Formed Steel Structural Members" (S100-16/S2-20).



Clip A

16g ASTM A653 SS Grade 33 Class 1 G60  
Bare metal thickness: (t) = 0.0538" (1.37mm)



www.TrusSteel.com

155 Harlem Ave., North Building, 4th Floor / Glenview, IL 60025 / (800) 755-6001

**TSC2.75 Chord End Vertical Attachment To Structural Steel Bearing Using Screws**

Alpine, a division of ITW Building Components Group, Inc. shall not be responsible for any performance failure in a connection due to a deviation from this detail. Any variation from this detail shall be approved in advance by Alpine, a division of ITW Building Components Group, Inc.

**Standard Detail:**  
TS075B

**Date:**  
06/01/22

**TrusSteel Detail Category:**  
Truss-To-Bearing: Structural Steel