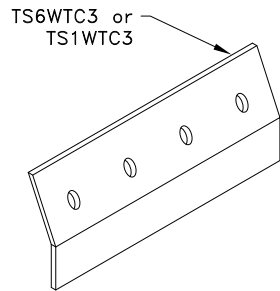
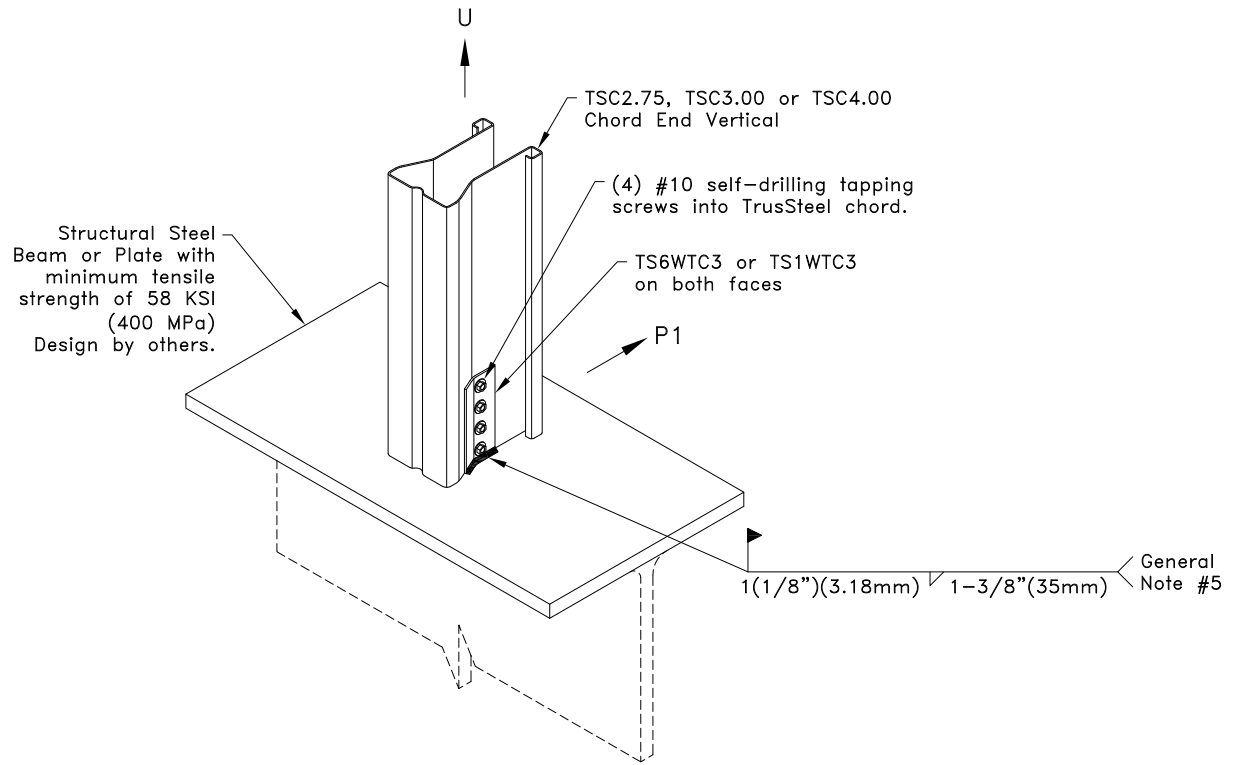


Allowable Loads lbs (kN) ^A			
Chord	Allowable Loads ^A	Clip on both faces	
		TS6WTC3	TS1WTC3
28TSC2.75 or 28TSC3.00 or 28TSC4.00	U	1640 (7.30)	1640 (7.30)
	P1	410 (1.82)	410 (1.82)
33TSC2.75 or 33TSC3.00 or 33TSC4.00	U	2010 (8.94)	2040 (9.07)
	P1	510 (2.27)	510 (2.27)
43TSC2.75 or 43TSC3.00 or 43TSC4.00	U	2010 (8.94)	3040 (13.52)
	P1	760 (3.38)	760 (3.38)
54TSC3.00 or 54TSC4.00	U	2010 (8.94)	4180 (18.59)
	P1	870 (3.87)	1050 (4.67)
68TSC3.00 or 68TSC4.00	U	2010 (8.94)	4180 (18.59)
	P1	870 (3.87)	1050 (4.67)
97TSC3.00 or 97TSC4.00	U	2010 (8.94)	4180 (18.59)
	P1	870 (3.87)	1050 (4.67)

A. Allowable loads shown on this detail are not in combination.



TS6WTC3
bare metal thickness (t) = 0.0538 in. (1.37mm)
TS1WTC3
bare metal thickness (t) = 0.128 in. (3.25mm)

General Notes:

1. This detail is for 1-Ply or 2-Ply truss only, for 3-Ply trusses contact a TrusSteel engineer.
2. Clip is required on both faces, attach the second clip to the opposite face of the chord as detailed.
3. Refer to TrusSteel Technical Bulletin 98.10.05 titled "Repair of Galvanized Surfaces" to restore corrosion resistant properties of the connection after welding.
4. If a TS6WTC3 clip is welded to steel in excess of 1/8" (3.18mm) thick the weld shall be qualified in accordance with Chapter 4 of the Structural Welding Code-Sheet Steel (AWS D1.3).
5. Weld values are based on a filler material with a minimum tensile strength of 70 ksi (483 MPa).
6. Cold-Formed Steel calculations are per the 2020 supplement to AISI 2016 "North American Specification for the Design of Cold-Formed Steel Structural Members" (S100-16/S2-20).



www.TrusSteel.com

155 Harlem Ave., North Building, 4th Floor / Glenview, IL 60025 / (800) 755-6001

**Chord End Vertical With
TS6WTC3 or TS1WTC3
Welded Truss Clip to Structural
Steel Bearing**

Alpine, a division of ITW Building Components Group, Inc. shall not be responsible for any performance failure in a connection due to a deviation from this detail. Any variation from this detail shall be approved in advance by Alpine, a division of ITW Building Components Group, Inc.

Standard Detail:
TS074

Date:
06/01/22

TrusSteel Detail Category:
Truss-To-Bearing: Structural Steel