

Hanger Parts Table				
Truss Chord Size	Trusses at 24" (610mm) O.C.		Trusses at 48" (1219mm) O.C.	
	Trapeze Member	Support Post	Trapeze Member	Support Post
TSC2.75	362S162-33 min.	33W.75x.75	362S162-54 min.	33W.75x1.5
TSC2.75	600S162-33 min.	33W.75x.75	600S162-33 min.	33W.75x1.5
TSC3.00 or TSC4.00	362S162-33 min.	33W1.5x1.5	362S162-54 min.	33W1.5x1.5
TSC3.00 or TSC4.00	600S162-33 min.	33W1.5x1.5	600S162-33 min.	33W1.5x1.5

Sprinkler Pipe Diameter & Hanger Load ^A		
Sprinkler Pipe Diameter in. (mm)	Maximum Hanger Load lbs. (kN)	Maximum Hanger Spacing ft (mm)
1 (25)	370 (1.65)	12 (3658)
1 1/4 (32)	430 (1.91)	12 (3658)
1 1/2 (38)	520 (2.31)	15 (4572)
2 (51)	630 (2.80)	15 (4572)

A. Values given are based on maximum hanger spacing.

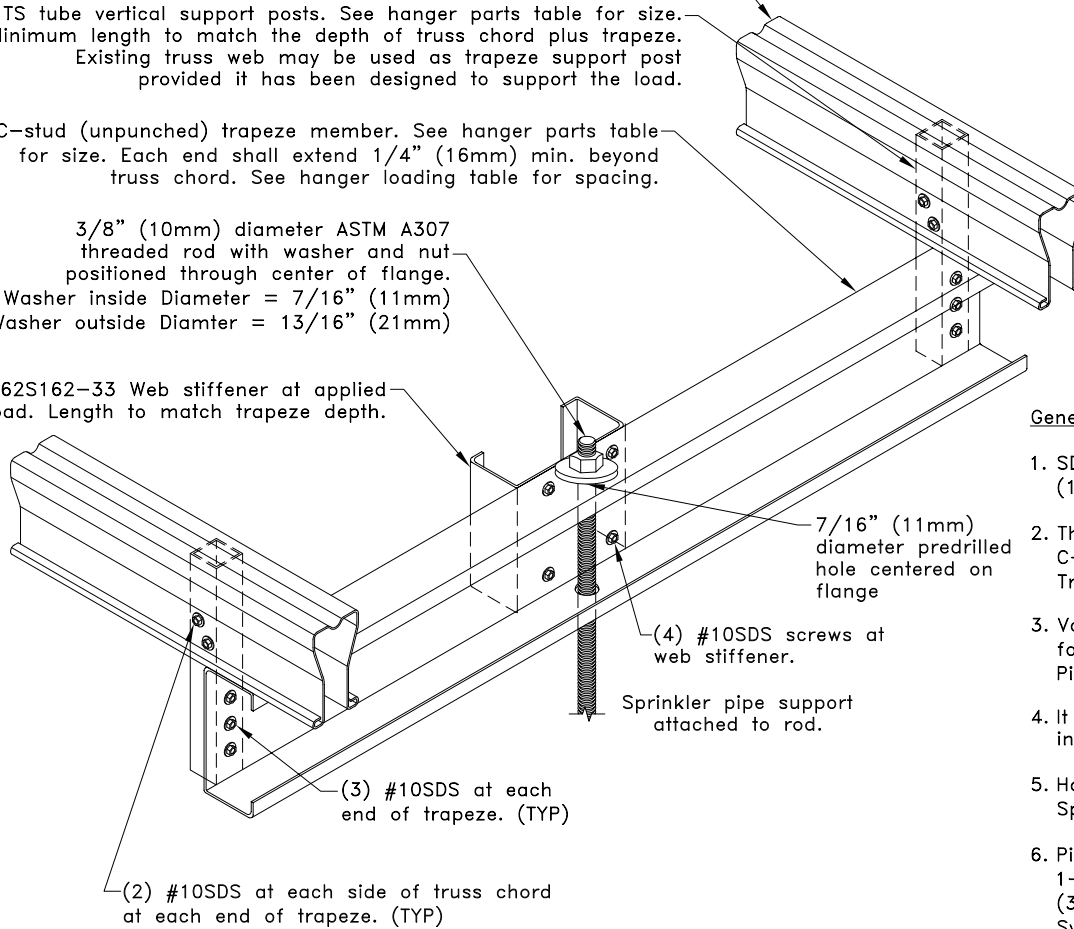
Truss top chords at 48" (1219mm) O.C. maximum.

TS tube vertical support posts. See hanger parts table for size. Minimum length to match the depth of truss chord plus trapeze. Existing truss web may be used as trapeze support post provided it has been designed to support the load.

C-stud (unpunched) trapeze member. See hanger parts table for size. Each end shall extend 1/4" (16mm) min. beyond truss chord. See hanger loading table for spacing.

3/8" (10mm) diameter ASTM A307 threaded rod with washer and nut positioned through center of flange. Washer inside Diameter = 7/16" (11mm) Washer outside Diameter = 13/16" (21mm)

362S162-33 Web stiffener at applied load. Length to match trapeze depth.



General Notes:

1. SDS = self-drilling tapping screw. Screw spacing, end and edge distance is 9/16" (14mm) min.
2. The minimum yield strengths of materials are as follows (unless otherwise noted): C-Stud Trapeze = 33ksi (228 MPa), Tube Steel support posts = 45ksi (310 MPa), TrusSteel Chords = 55ksi (379 MPa).
3. Values shown are for the sprinkler pipe hanger only. Truss must be properly loaded for sprinkler pipe load. Refer to TrusSteel Technical Bulletin TB00.09.01, "Sprinkler Pipes - Truss Loading & Connections".
4. It is the responsibility of the Building Designer to verify that the hanger design given in this detail conforms with the overall sprinkler system support design.
5. Hanger loads were determined per NFPA 13 2016 "Standard For The Installation Of Sprinkler Systems" and assume schedule 40 steel pipe.
6. Pipe hanger spacing shall not exceed 12 ft (3658mm) for pipes up to and including 1-1/4 in. (32mm) diameter and 15 ft (4572mm) for pipes greater than 1-1/4 in. (32mm) diameter per NFPA 13 2016 "Standard For The installation of Sprinkler Systems".
7. Nut shall be grade A, HEX conforming to ASTM A563 and Washer shall conform to ASTM F436.
8. Cold-Formed Steel Calculations are per the AISI 2016 "North American Specifications for the Design of Cold-Formed Steel Structural Members" (S100-16).

Note: Hanger rod assembly may be placed anywhere along the trapeze.



www.TrusSteel.com

Florida: 6750 Forum Drive, Suite 305 / Orlando, FL 32821 / (800) 755-6001
Missouri: 13723 Riverport Drive, Suite 200 / Maryland Heights, MO 63043 / (800) 326-4102

C-Stud Sprinkler Trapeze at Top Chord for 2" (51mm) Max. Diameter Pipe

Alpine, a division of ITW Building Components Group, Inc. shall not be responsible for any performance failure in a connection due to a deviation from this detail. Any variation from this detail shall be approved in advance by Alpine, a division of ITW Building Components Group, Inc.

Standard Detail:
TS049E

Date:
10/11/18

TrusSteel Detail Category:
Top Chord Sprinkler Hanger