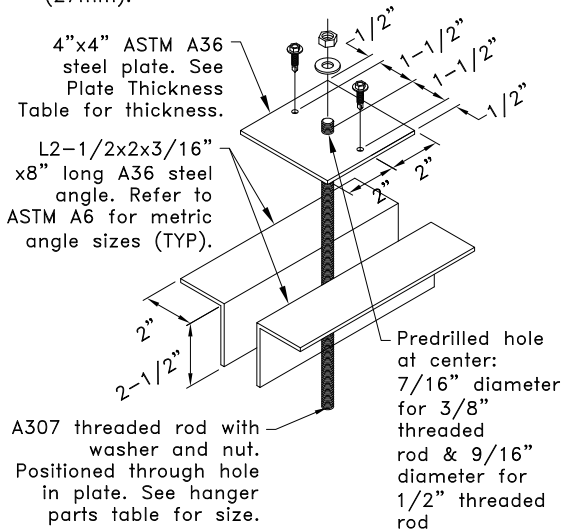


SPRINKLER PIPE DIAMETERS AND HANGER LOADS ^A	
Max. Sprinkler Pipe Diameter, in. (mm)	Max. Hanger Load lbs (kN)
2 (51)	640 (2.85)
4 (102)	1480 (6.58)
6 (152)	2630 (11.70)
8 (203)	4060 (18.06)

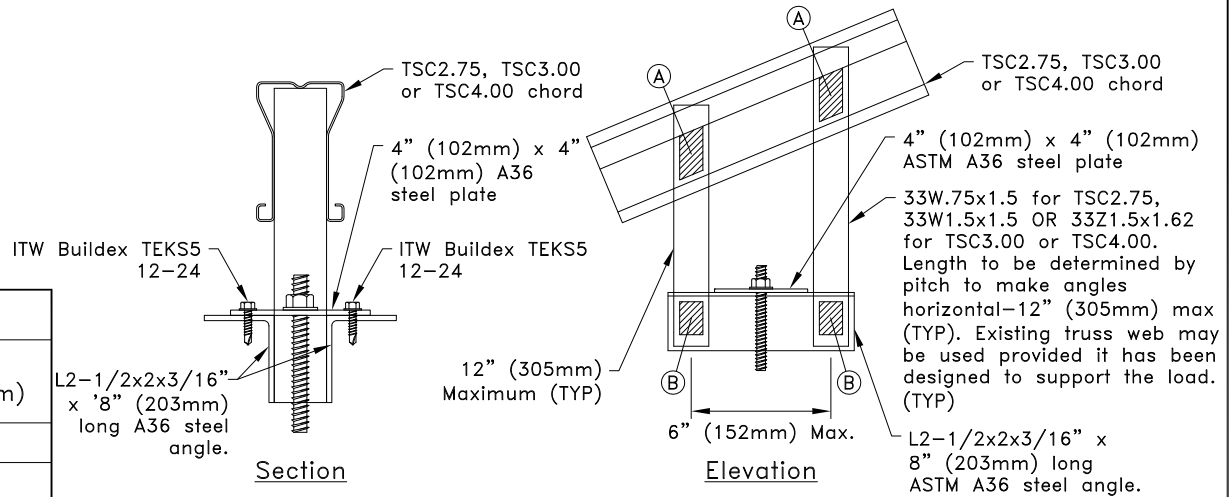
A. Values given are for maximum hanger spacing of 15' (4572mm)

Plate Thickness Table		
Max. Sprinkler Pipe Diameter, in. (mm)	Threaded Rod Diameter in. (mm) ^B	ASTM A36 Plate Thickness in. (mm)
2 (51)	3/8 (10)	3/16 (5)
4 (102)	3/8 (10)	1/4 (6)
6 (152)	1/2 (13)	5/16 (8)
8 (203)	1/2 (13)	3/8 (10)

B. For 3/8" (10mm) diameter threaded rod / nut, washer inside diameter = 7/16" (11mm) and outside diameter = 13/16" (21mm). For 1/2" (13mm) diameter threaded rod / nut, washer inside diameter = 9/16" (14mm) and outside diameter = 1-1/16" (27mm).



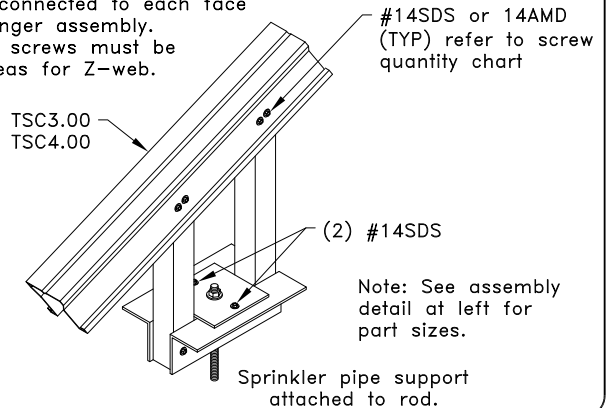
Note: Multiply above units by 25.4 for millimeters.



Max. Sprinkler Pipe Diameter, in. (mm)	Screws	
	(A)	(B)
2 (51)	2	2
4 (102)	2	2
6 (152)	3	3
8 (203)	4	5

-Screws shall be connected to each face of chord and hanger assembly.
-Equal number of screws must be placed in flat areas for Z-web.

TSC2.75, TSC3.00 or TSC4.00



Note: See assembly detail at left for part sizes.

General Notes:

1. SDS = self-drilling tapping screw
2. Screw spacing and end distance is 3/4" (19mm).
3. Values shown are for the sprinkler pipe hanger only. Truss must be properly loaded for sprinkler pipe load. Refer to TrusSteel Technical Bulletin TB00.09.01, "Sprinkler Pipes - Truss Loading & Connections".
4. It is the responsibility of the Building Designer to verify that the hanger design given in this detail conforms with the overall sprinkler system support design.
5. Hanger loads were determined per NFPA 13 2016 "Standard For The Installation Of Sprinkler Systems" and assume schedule 40 steel pipe.
6. Pipe hanger spacing shall not exceed 12 ft (3658mm) for pipes up to and including 1-1/4 in. (32mm) diameter and 15 ft (4572mm) for pipes greater than 1-1/4 in. (32mm) diameter per NFPA 13 2016 "Standard For The Installation of Sprinkler Systems". Nut shall be grade A, HEX conforming to ASTM A563 and Washer shall conform to ASTM F436.
7. Cold-Formed Steel Calculations are per the AISI 2016 "North American Specifications for the Design of Cold-Formed Steel Structural Members" (S100-16).

ALPINE TrusSteel™
www.TrusSteel.com

Florida: 6750 Forum Drive, Suite 305 / Orlando, FL 32821 / (800) 755-6001
Missouri: 13723 Riverport Drive, Suite 200 / Maryland Heights, MO 63043 / (800) 326-4102

Top Chord Sprinkler Pipe Hanger For 8" (203mm) Maximum Diameter Pipe

Alpine, a division of ITW Building Components Group, Inc. shall not be responsible for any performance failure in a connection due to a deviation from this detail. Any variation from this detail shall be approved in advance by Alpine, a division of ITW Building Components Group, Inc.

Standard Detail:
TS049B

Date:
10/11/18

TrusSteel Detail Category:
Sprinkler Pipe Hangers