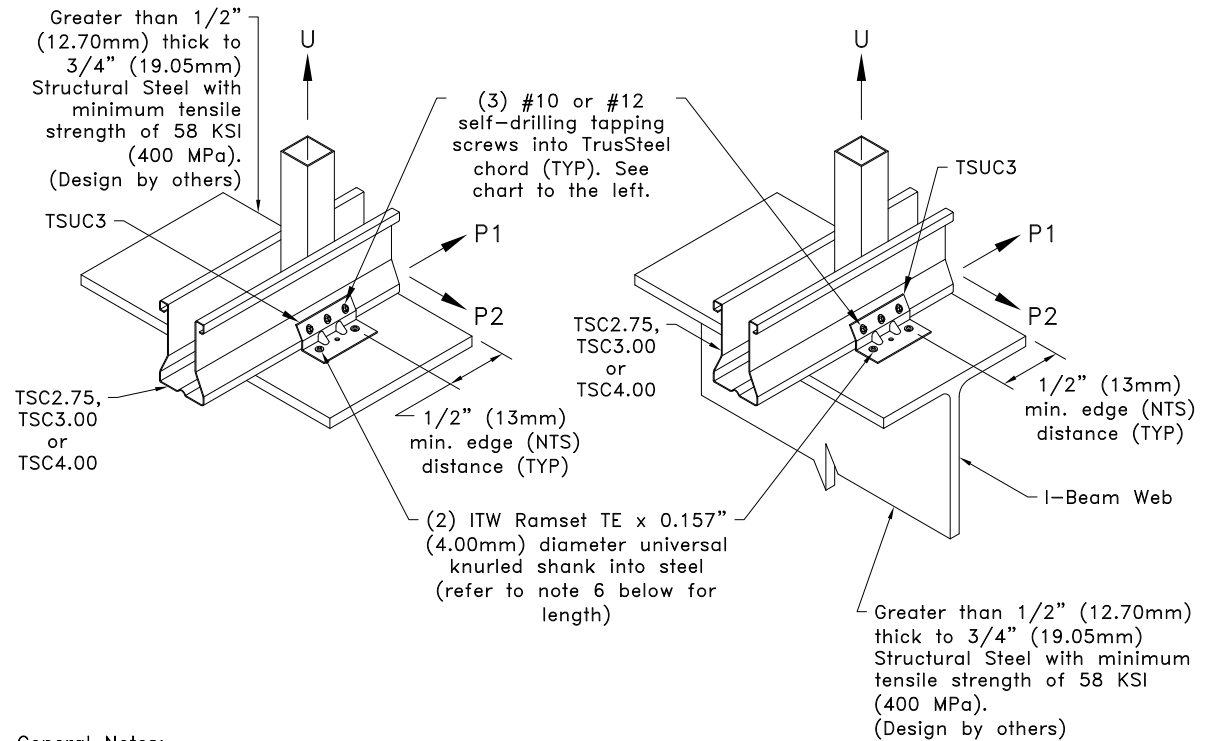


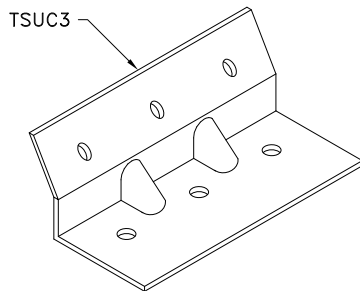
Allowable Loads lbs (kN)<sup>A,C</sup>

Chord	Clip on one face <sup>B</sup>					
	#10SDS into bottom chord			#12SDS into bottom chord		
	U	P1	P2	U	P1	P2
28TSC2.75	400 (1.78)	620 (2.76)	310 (1.38)	400 (1.78)	660 (2.94)	340 (1.51)
33TSC2.75		770 (3.43)	340 (1.51)		820 (3.65)	
43TSC2.75		990 (4.40)			990 (4.40)	
28TSC3.00 or 28TSC4.00	580 (2.58)	620 (2.76)	310 (1.38)	660 (2.94)		
33TSC3.00 or 33TSC4.00		770 (3.43)		820 (3.65)		
43 & 54TSC3.00, 43, 54, 68 & 97TSC4.00		990 (4.40)	340 (1.51)	990 (4.40)		
Chord	Clip on both faces					
	#10SDS into bottom chord			#12SDS into bottom chord		
	U	P1	P2	U	P1	P2
28TSC	1230 (5.47)		630 (2.80)	1310 (5.83)		710 (3.16)
33TSC	1370 (6.09)	1530 (6.81)	730 (3.25)	1370 (6.09)	1630 (7.25)	830 (3.69)
43, 54, 68 & 97TSC		1980 (8.81)	880 (3.91)		1980 (8.81)	880 (3.91)



General Notes:

1. If a clip is required on both faces, attach the second clip to the opposite face of the chord as detailed.
2. Multi-ply trusses require a clip on each face. Refer to TrusSteel detail drawing TS023A for ply-to-ply connections for 3-Ply trusses with a clip on each face.
3. Install pins in the two outside holes of TSUC3 clip.
4. Pins must be driven through existing holes in TSUC3 clip and be driven perpendicular to steel surface.
5. Care must be taken to ensure pins are not overdriven. Pins that are overdriven may puncture surface of TSUC3 clip causing damage. If TSUC3 clip is damaged, the values given on this detail are no longer valid.
6. Pin length shall be minimum of 5/8" (16mm) to ensure a pin penetration of a minimum of 1/2" (13mm).
7. Do not install pins into area of beam flange directly above beam web.
8. Allowable ITW Ramset TE Fastener values into steel bearing are per ICC ESR-1799 (June 2017). Refer to ESR regarding proper installation of fastener.
9. Cold-Formed Steel Calculations are per the AISI 2016 "North American Specifications for the Design of Cold-Formed Steel Structural Members" (S100-16).



www.TrusSteel.com

Florida: 6750 Forum Drive, Suite 305 / Orlando, FL 32821 / (800) 755-6001  
 Missouri: 13723 Riverport Drive, Suite 200 / Maryland Heights, MO 63043 / (800) 326-4102

TSUC3 Uplift Attachment To  
 Structural Steel Bearing Using ITW  
 Ramset Pins  
 (Steel Greater Than 1/2" to 3/4" Thick)

Alpine, a division of ITW Building Components Group, Inc. shall not be responsible for any performance failure in a connection due to a deviation from this detail. Any variation from this detail shall be approved in advance by Alpine, a division of ITW Building Components Group, Inc.

Standard Detail:  
 TS039C

Date:  
 10/11/18

TrusSteel Detail Category:  
 Truss-To-Bearing: Structural Steel