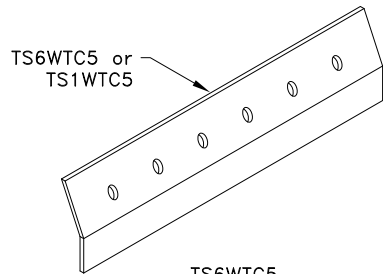
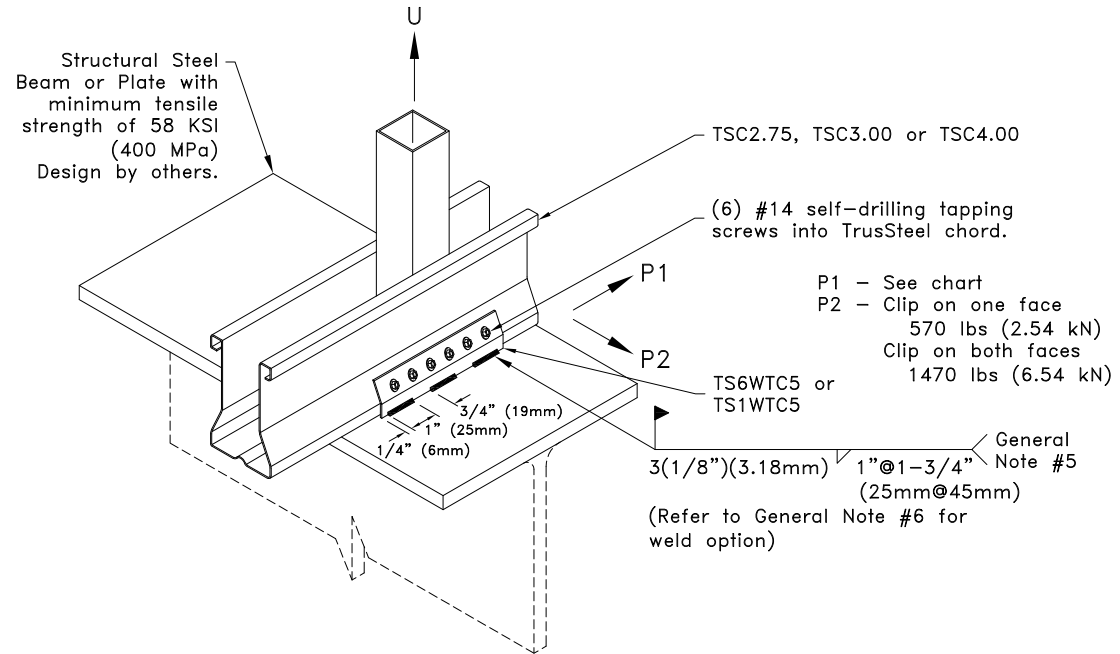


Allowable Loads lbs (kN) ^A					
Chord	Allowable Loads ^A	Clip on one face ^B		Clip on both faces	
		TS6WTC5	TS1WTC5	TS6WTC5	TS1WTC5
28TSC2.75	U	550 (2.45) ^C		2820 (1254)	
	P1	1410 (6.27)		2820 (1254)	
33TSC2.75	U	550 (2.45) ^C		3510 (15.61)	
	P1	1760 (7.83)		3510 (15.61)	
43TSC2.75	U	550 (2.45) ^C		5230 (23.26)	
	P1	2470 (10.99)	2610 (11.61)	4930 (21.93)	5230 (23.26)
28TSC3.00 or 28TSC4.00	U	910 (4.05) ^{D,E}		2820 (1254)	
33TSC3.00 or 33TSC4.00	P1	1410 (6.27)		2820 (1254)	
	U	910 (4.05) ^{D,E}		3510 (15.61)	
43TSC3.00 or 43TSC4.00	P1	1760 (7.83)		3510 (15.61)	
	U	910 (4.05) ^{D,E,F,G}		5230 (23.26)	
54TSC3.00 or 54TSC4.00	U	910 (4.05) ^{D,E,F,G}		5530 (24.60)	7350 (32.69)
68TSC4.00 or 97TSC4.00	P1	2470 (10.99)	3680 (16.37)	4930 (21.93)	7350 (32.69)
	U	910 (4.05) ^{D,E,F,G}		5530 (24.60)	10370 (4613)
	P1	2470 (10.99)	5180 (23.04)	4930 (21.93)	10370 (4613)

- A. Allowable loads shown on this detail are not in combination.
 B. Uplift connections with clip on one face require a web above connection. For values in chart, TSC2.75 minimum web is 33W.75x.75 and TSC3.00 or TSC4.00 minimum web is 33W1.5x.75.
 C. If web above connection is 33W.75x1.5, U = 960 lbs (4.27 kN).
 D. If web above connection is 33C1.5x1.5, U = 1230 lbs (5.47 kN).
 E. If web above connection is 33W1.5x1.5 or 33Z1.5x1.62, U = 1400 lbs (6.23 kN).
 F. If web above connection is 33Z1.5x2.50, U = 1940 lbs (8.63 kN).
 G. If web above connection is 43Z1.5x2.50, U = 2480 lbs (11.03 kN).



TS6WTC5
bare metal thickness (t) = 0.0538 in. (1.37mm)
 TS1WTC5
bare metal thickness (t) = 0.128 in. (3.25mm)



General Notes:

1. If a clip is required on both faces, attach the second clip to the opposite face of the chord as detailed.
2. Multi-ply trusses require a clip on each face. Refer to TrusSteel detail drawing TS023A for ply-to-ply connections for 3-Ply trusses with a clip on each face.
3. Refer to TrusSteel Technical Bulletin 98.10.05 titled "Repair of Galvanized Surfaces" to restore corrosion resistant properties of the connection after welding.
4. If a TS6WTC5 clip is welded to steel in excess of 1/8" (3.18mm) thick the weld shall be qualified in accordance with Chapter 4 of the Structural Welding Code-Sheet Steel (AWS D1.3).
5. Weld values are based on a filler material with a minimum tensile strength of 70 ksi (483 MPa).
6. In lieu of welds specified above, the full length of the TS6WTC5/TS1WTC5 may be welded to the bearing.
7. Cold-Formed Steel calculations are per the 2020 supplement to AISI 2016 "North American Specification for the Design of Cold-Formed Steel Structural Members" (S100-16/S2-20).



www.TrusSteel.com

155 Harlem Ave., North Building, 4th Floor / Glenview, IL 60025 / (800) 755-6001

**TS6WTC5 or TS1WTC5
Welded Truss Clip
to Structural Steel Bearing**

Alpine, a division of ITW Building Components Group, Inc. shall not be responsible for any performance failure in a connection due to a deviation from this detail. Any variation from this detail shall be approved in advance by Alpine, a division of ITW Building Components Group, Inc.

Standard Detail:

TS027E

Date:

06/01/22

TrusSteel Detail Category:

Truss-To-Bearing: Structural Steel