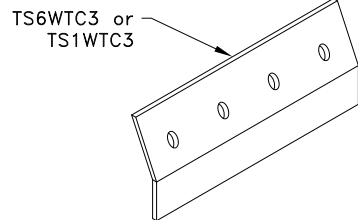


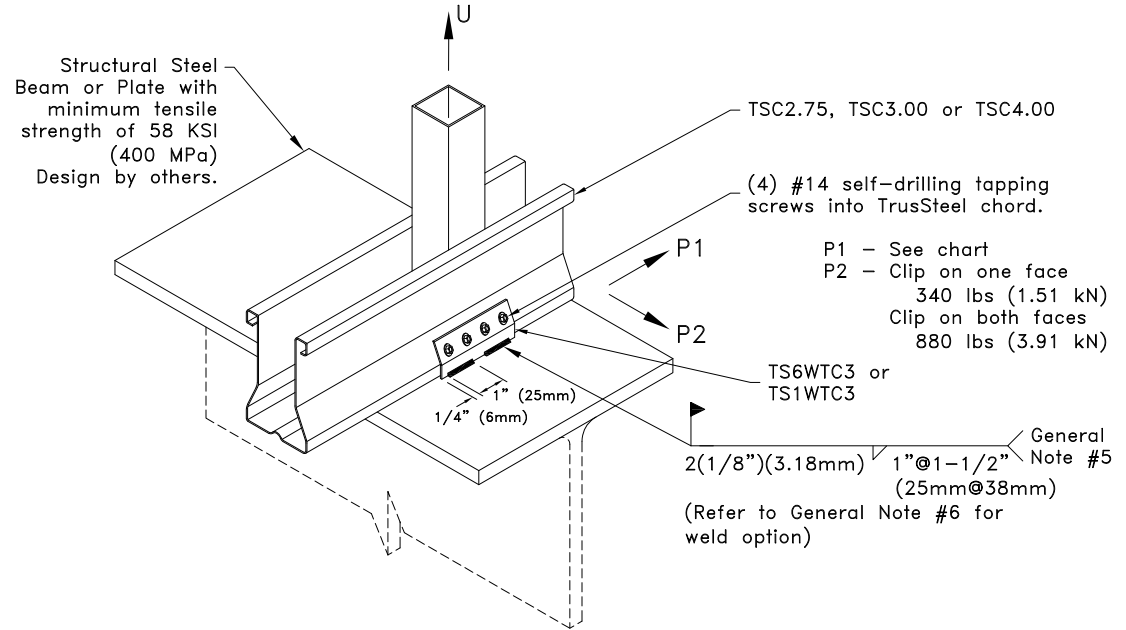
Allowable Loads lbs (kN)^A

Chord	Allowable Loads ^A	Clip on one face ^B		Clip on both faces	
		TS6WTC3	TS1WTC3	TS6WTC3	TS1WTC3
28TSC2.75	U	550 (2.45) ^C		1880 (8.36)	
	P1	940 (4.18)		1880 (8.36)	
33TSC2.75	U	550 (2.45) ^C		2340 (10.41)	
	P1	1170 (5.20)		2340 (10.41)	
43TSC2.75	U	550 (2.45) ^C		3170 (14.10)	3490 (15.52)
	P1	1640 (7.30)	1740 (7.74)	3290 (14.63)	3490 (15.52)
28TSC3.00 or 28TSC4.00	U	910 (4.05)		1880 (8.36)	
	P1	940 (4.18)		1880 (8.36)	
33TSC3.00 or 33TSC4.00	U	910 (4.05)		2340 (10.41)	
	P1	1170 (5.20)		2340 (10.41)	
43TSC3.00 or 43TSC4.00	U	910 (4.05) ^{D,E,F}	910 (4.05) ^{D,E,G}	3170 (14.10)	3490 (15.52)
	P1	1640 (7.30)	1740 (7.74)	3290 (14.63)	3490 (15.52)
54TSC3.00 or 54TSC4.00	U	910 (4.05) ^{D,E,F}	910 (4.05) ^{D,E,G}	3170 (14.10)	4900 (21.80)
	P1	1640 (7.30)	2450 (10.90)	3290 (14.63)	4900 (21.80)
68TSC4.00 or 97TSC4.00	U	910 (4.05) ^{D,E,F}	910 (4.05) ^{D,E,G}	3170 (14.10)	6910 (30.74)
	P1	1640 (7.30)	3460 (15.39)	3290 (14.63)	6910 (30.74)

- A. Allowable loads shown on this detail are not in combination.
 B. Uplift connections with clip on one face require a web above connection. For values in chart, TSC2.75 minimum web is 33W.75x.75 and TSC3.00 or TSC4.00 minimum web is 33W1.5x.75.
 C. If web above connection is 33W.75x1.5, U = 940 lbs (4.18 kN).
 D. If web above connection is 33C1.5x1.5, U = 1230 lbs (5.47 kN).
 E. If web above connection is 33W1.5x1.5 or 33Z1.5x1.62, U = 1400 lbs (6.23 kN).
 F. If web above connection is 33Z1.5x2.50, U = 1580 lbs (7.03 kN).
 G. If web above connection is 33Z1.5x2.50, U = 1740 lbs (7.74 kN).



TS6WTC3
bare metal thickness (t) = 0.0538 in. (1.37mm)
 TS1WTC3
bare metal thickness (t) = 0.128 in. (3.25mm)



General Notes:

1. If a clip is required on both faces, attach the second clip to the opposite face of the chord as detailed.
2. Multi-ply trusses require a clip on each face. Refer to TrusSteel detail drawing TS023A for ply-to-ply connections for 3-Ply trusses with a clip on each face.
3. Refer to TrusSteel Technical Bulletin 98.10.05 titled "Repair of Galvanized Surfaces" to restore corrosion resistant properties of the connection after welding.
4. If a TS6WTC3 clip is welded to steel in excess of 1/8" (3.18mm) thick the weld shall be qualified in accordance with Chapter 4 of the Structural Welding Code-Sheet Steel (AWS D1.3).
5. Weld values are based on a filler material with a minimum tensile strength of 70 ksi (483 MPa).
6. In lieu of welds specified above, the full length of the TS6WTC3/TS1WTC3 may be welded to the bearing.
7. Cold-Formed Steel calculations are per the 2020 supplement to AISI 2016 "North American Specification for the Design of Cold-Formed Steel Structural Members" (S100-16/S2-20).



www.TrusSteel.com

155 Harlem Ave., North Building, 4th Floor / Glenview, IL 60025 / (800) 755-6001

TS6WTC3 or TS1WTC3
Welded Truss Clip
to Structural Steel Bearing

Alpine, a division of ITW Building Components Group, Inc. shall not be responsible for any performance failure in a connection due to a deviation from this detail. Any variation from this detail shall be approved in advance by Alpine, a division of ITW Building Components Group, Inc.

Standard Detail:

TS027D

Date:

06/01/22

TrusSteel Detail Category:

Truss-To-Bearing: Structural Steel