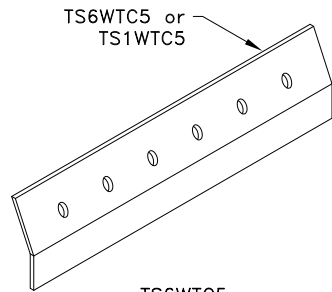
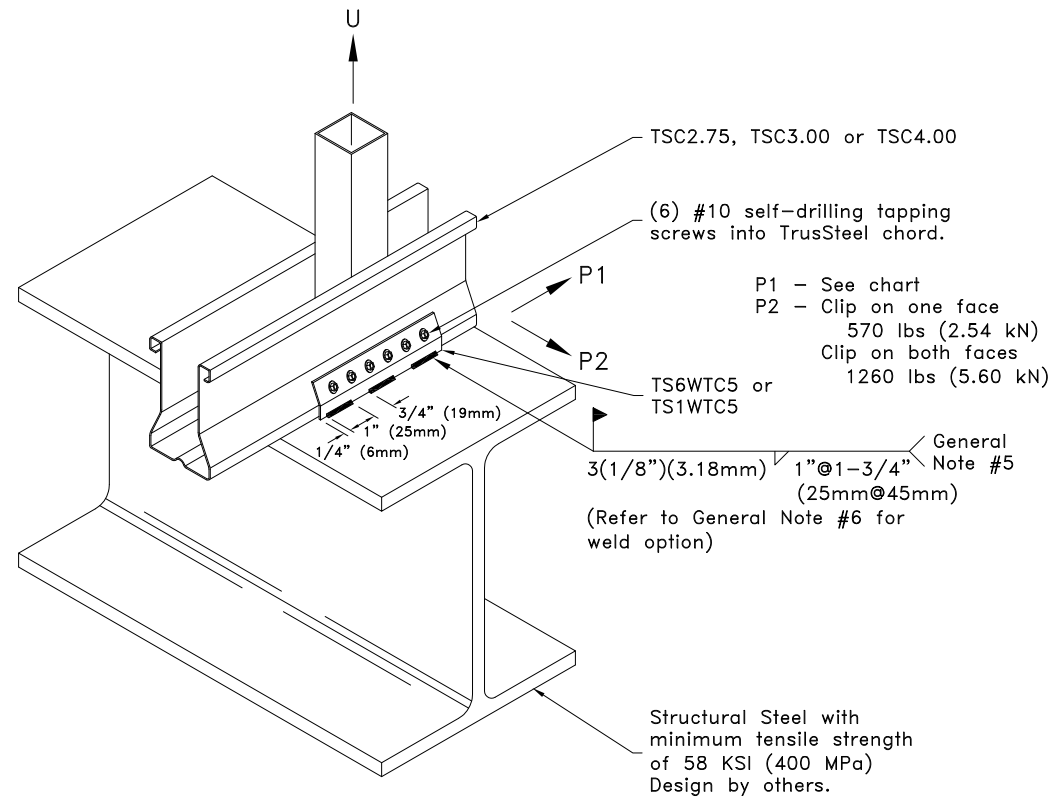


Allowable Loads lbs (kN) <sup>A</sup>					
Chord	Allowable Loads <sup>A</sup>	Clip on one face <sup>B</sup>		Clip on both faces	
		TS6WTC5	TS1WTC5	TS6WTC5	TS1WTC5
28TSC2.75	U	550 (2.45) <sup>C</sup>		2460 (10.94)	
	P1	1230 (5.47)		2460 (10.94)	
33TSC2.75	U	550 (2.45) <sup>C</sup>		3060 (13.61)	
	P1	1530 (6.81)		3060 (13.61)	
43TSC2.75	U	550 (2.45) <sup>C</sup>		4560 (20.28)	
	P1	2280 (10.14)		4560 (20.28)	
28TSC3.00 or 28TSC4.00	U	1230 (5.47) <sup>D,E</sup>		2460 (10.94)	
	P1	1230 (5.47)		2460 (10.94)	
33TSC3.00 or 33TSC4.00	U	1400 (6.23) <sup>D,E</sup>		3060 (13.61)	
	P1	1530 (6.81)		3060 (13.61)	
43TSC3.00 or 43TSC4.00	U	1400 (6.23) <sup>D,E,F,G</sup>		4560 (20.28)	
	P1	2280 (10.14)		4560 (20.28)	
54TSC3.00, 54, 68, and 97TSC4.00	U	1400 (6.23) <sup>D,E,F,G</sup>		5230 (23.26)	6280 (27.93)
	P1	2470 (10.99)	3140 (13.97)	4930 (21.93)	6280 (27.93)

- A. Allowable loads shown on this detail are not in combination.  
 B. Uplift connections with clip on one face require a web above connection. For values in chart, TSC2.75 minimum web is 33W.75x.75 and TSC3.00 or TSC4.00 minimum web is 33W1.5x1.5.  
 C. If web above connection is 33W.75x1.5, U = 960 lbs (4.27 kN).  
 D. If web above connection is 33W1.5x.75, U = 910 lbs (4.05 kN).  
 E. If web above connection is 33C1.5x1.5, U = 1230 lbs (5.47 kN).  
 F. If web above connection is 33Z1.5x2.5, U = 1940 lbs (8.63 kN).  
 G. If web above connection is 43Z1.5x2.5, U = 2280 lbs (10.14 kN).



TS6WTC5  
bare metal thickness (t) = 0.0538 in. (1.37mm)  
 TS1WTC5  
bare metal thickness (t) = 0.128 in. (3.25mm)



**General Notes:**

1. If a clip is required on both faces, attach the second clip to the opposite face of the chord as detailed.
2. Multi-ply trusses require a clip on each face. Refer to TrusSteel detail drawing TS023A for ply-to-ply connections for 3-Ply trusses with a clip on each face.
3. Refer to TrusSteel Technical Bulletin 98.10.05 titled "Repair of Galvanized Surfaces" to restore corrosion resistant properties of the connection after welding.
4. If a TS6WTC5 clip is welded to steel in excess of 3/16" (4.76mm) thick the weld shall be qualified in accordance with Chapter 4 of the Structural Welding Code-Sheet Steel (AWS D1.3).
5. Weld values are based on a filler material with a minimum tensile strength of 70 ksi (483 MPa).
6. In lieu of welds specified above, the full length of the TS6WTC5/TS1WTC5 may be welded to the bearing.
7. Cold-Formed Steel Calculations are per the AISI 2016 "North American Specifications for the Design of Cold-Formed Steel Structural Members" (S100-16).



www.TrusSteel.com

Florida: 6750 Forum Drive, Suite 305 / Orlando, FL 32821 / (800) 755-6001  
 Missouri: 13723 Riverport Drive, Suite 200 / Maryland Heights, MO 63043 / (800) 326-4102

**TS6WTC5 or TS1WTC5  
Welded Truss Clip  
to Structural Steel Bearing**

Alpine, a division of ITW Building Components Group, Inc. shall not be responsible for any performance failure in a connection due to a deviation from this detail. Any variation from this detail shall be approved in advance by Alpine, a division of ITW Building Components Group, Inc.

**Standard Detail:**

TS027A

**Date:**

10/11/18

**TrusSteel Detail Category:**

Truss-To-Bearing: Structural Steel