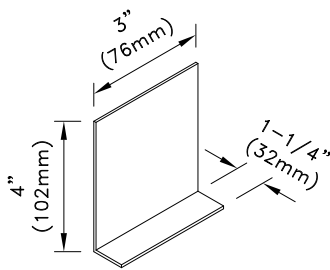
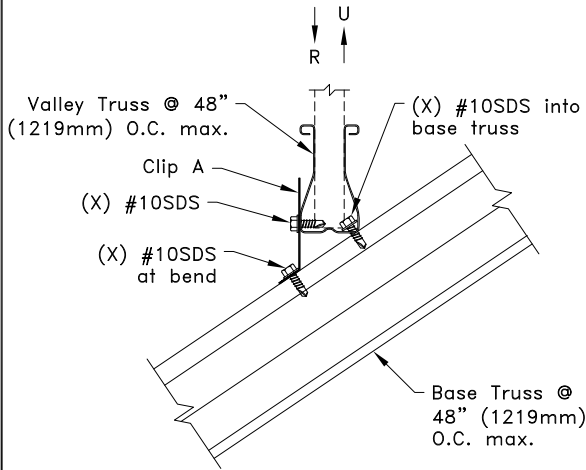


Connection Detail A

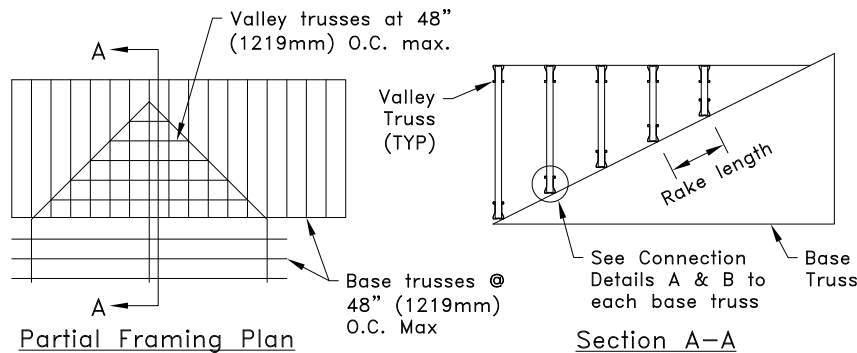
Pitch Range: 12/12 maximum

Allowable Loads - lbs (kN)			
X	Allowable Loads	Base Truss	
		TSC2.75 ^A	TSC3.00 or TSC4.00
2	R	670 (2.98)	670 (2.98)
	U	410 (1.82)	410 (1.82)
3	R	NA	670 (2.98)
	U	NA	620 (2.76)

A. TSC2.75 valley truss only.



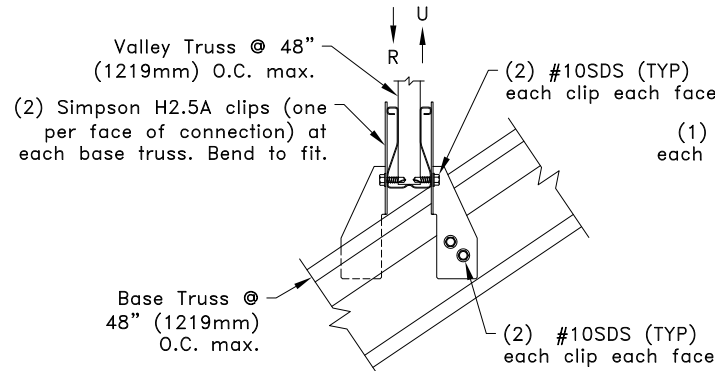
Clip A
18g ASTM A653 SS Grade 33 G60
Bare Metal Thickness = 0.0428"
(1.087mm)
Bend clip to roof pitch.



Connection Detail B

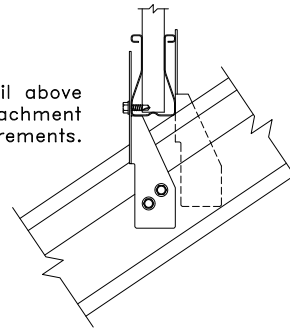
Pitch Range: 12/12 maximum
R = 670 lbs (2.98 kN)
U = 820 lbs (3.65 kN)

OR



Connection Detail B Alternate Clip Attachment

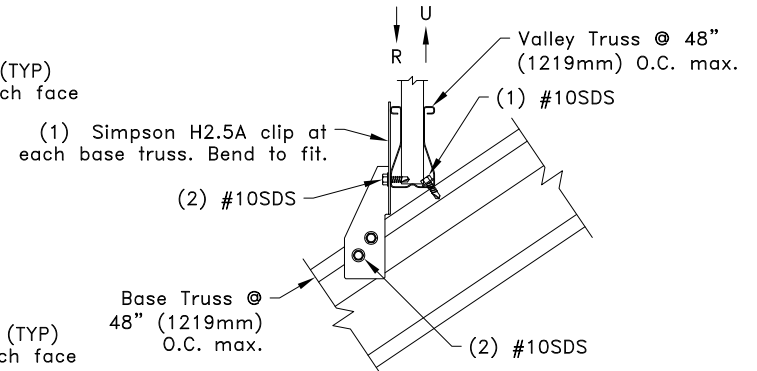
See detail above for attachment requirements.



Connection Detail C

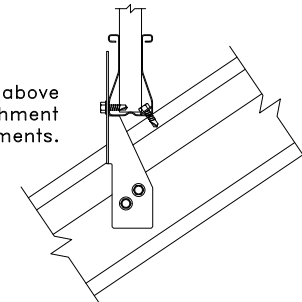
Pitch Range: 9/12 maximum
R = 670 lbs (2.98 kN)
U = 320 lbs (1.42 kN)

OR



Connection Detail C Alternate Clip Attachment

See detail above for attachment requirements.



General Notes:

1. SDS = Self-Drilling Tapping Screw. Screw spacing, edge distance and end distance is 9/16" (14mm) minimum.
2. X refers to required number of screws at location.
3. Refer to approved bracing design for required bracing material and connections.
4. Properly attached valley trusses may be used in lieu of purlins if the top chord of the supporting truss has been designed with purlins at O.C. spacing equal to the rake length between valley trusses as shown in the Section A-A.
5. Refer to approved truss drawings for valley truss designs. Valley truss bottom chord panels not to exceed 4'0" (1219mm). Web in valley truss should be located at connection.
6. R refers to vertical reaction and U refers to uplift.
7. It is permissible to substitute an equal alternative for the Simpson Strong-Tie hardware specified on this detail.
8. Cold-Formed Steel Calculations are per the AISI 2016 "North American Specifications for the Design of Cold-Formed Steel Structural Members" (S100-16).



www.TrusSteel.com

Florida: 6750 Forum Drive, Suite 305 / Orlando, FL 32821 / (800) 755-6001
Missouri: 13723 Riverport Drive, Suite 200 / Maryland Heights, MO 63043 / (800) 326-4102

TrusSteel Valley Truss Connection to Base Truss

Alpine, a division of ITW Building Components Group, Inc. shall not be responsible for any performance failure in a connection due to a deviation from this detail. Any variation from this detail shall be approved in advance by Alpine, a division of ITW Building Components Group, Inc.

Standard Detail:

TS026

Date:

10/11/18

TrusSteel Detail Category:

Valley Set