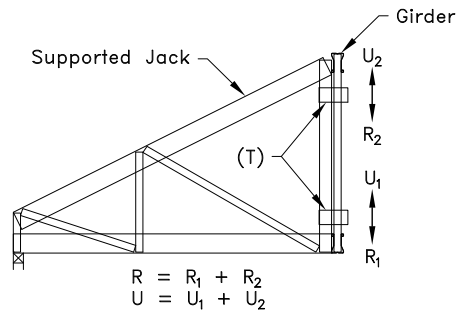


(T) = TTC; for 2 clip connection, place at top and bottom as shown. For 1 clip connection, place at bottom, or as analyzed. Bend clip to fit.



Typical Jack to Girder Connection

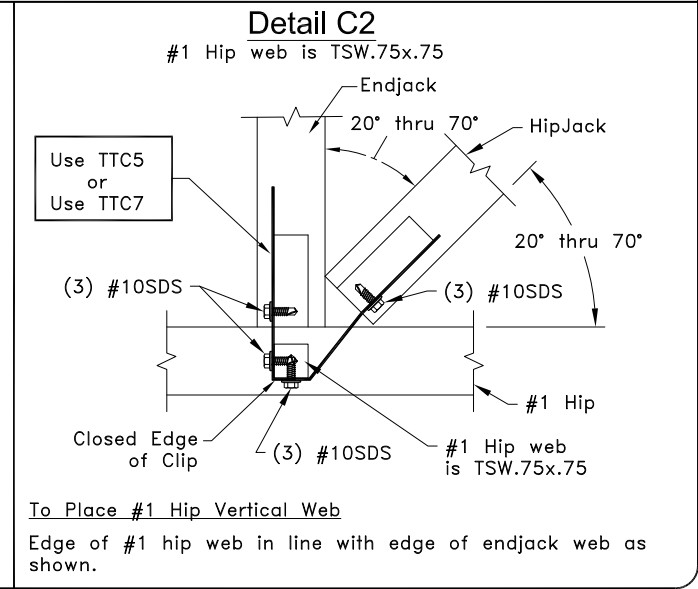
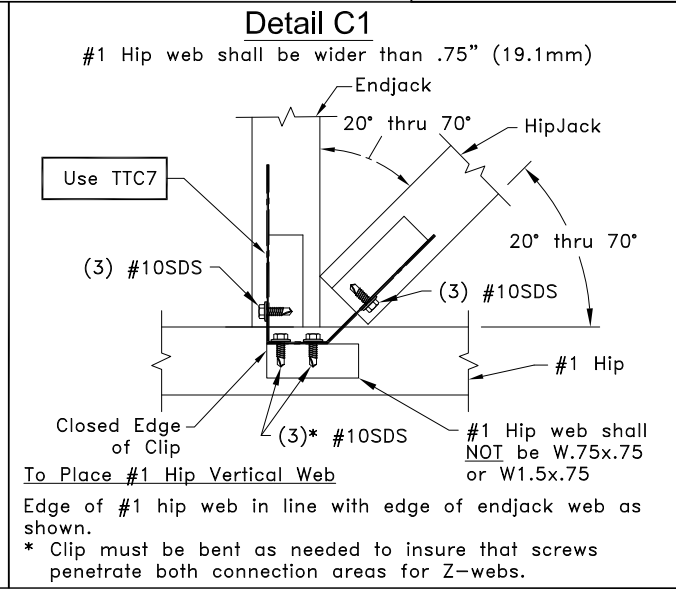
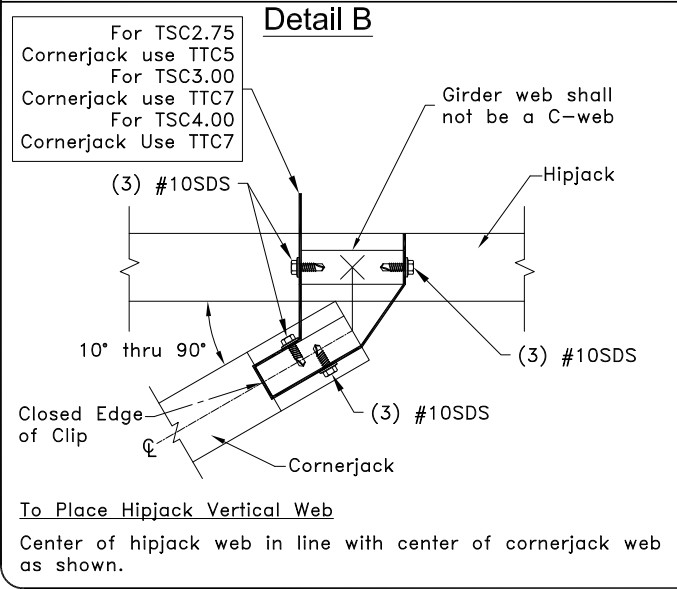
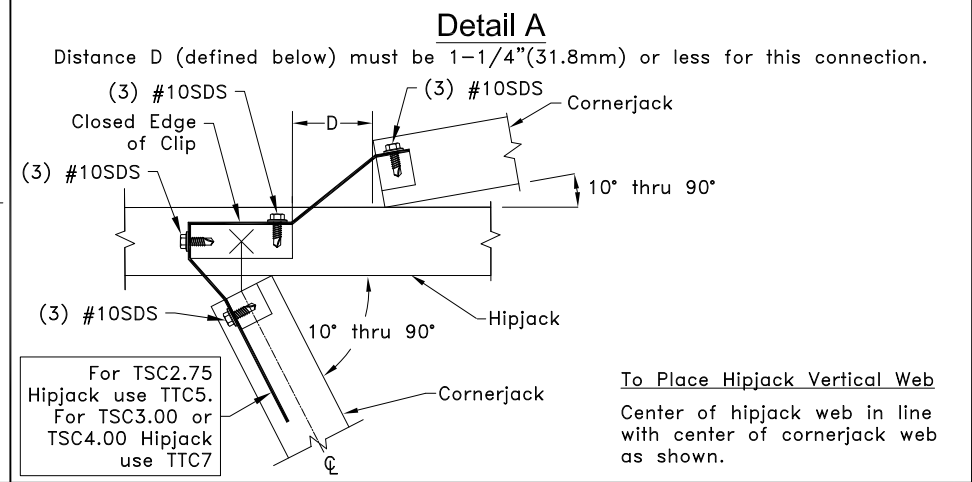
Allowable Values

| Supported Jack Type | Number of Clips | R = U lbs (kN) |
|---------------------|-----------------|----------------|
| Cornerjack | 1 ^A | 500 (2.22) |
| Cornerjack | 2 | 1000 (4.44) |
| Hipjack | 2 | 1235 (5.49) |
| Endjack | 2 | 1235 (5.49) |

A. (1) Clip may be used when supported truss height is less than 48" (1219mm).

General Notes:

1. The top and bottom chords of all trusses shall be properly connected to structural sheathing or purlins.
2. If supported truss or girder web is a Z-web, refer to TS068 for connection areas.
3. SDS = Self-Drilling Tapping Screw. Screw spacing, edge distance and end distance is 9/16" (14mm) minimum.
4. Truss must be analyzed with concentrated loads directly in line with correctly placed girder vertical webs. Details A, B, C1, & C2 give correct web placement information.
5. For multi-ply #1 Hips, refer to Standard Detail TS025D for ply to ply connection requirements.
6. Girder web shall not be a C-Web.
7. Cold-Formed Steel Calculations are per the AISI 2016 "North American Specifications for the Design of Cold-Formed Steel Structural Members" (S100-16).



www.TrusSteel.com

Florida: 6750 Forum Drive, Suite 305 / Orlando, FL 32821 / (800) 755-6001
 Missouri: 13723 Riverport Drive, Suite 200 / Maryland Heights, MO 63043 / (800) 326-4102

Non 45 degree Hipjack, Endjack, & Cornerjack Connection Details

Alpine, a division of ITW Building Components Group, Inc. shall not be responsible for any performance failure in a connection due to a deviation from this detail. Any variation from this detail shall be approved in advance by Alpine, a division of ITW Building Components Group, Inc.

Standard Detail:
 TS025A
 Date:
 10/11/18
 TrusSteel Detail Category:
 Truss-to-Truss Connection