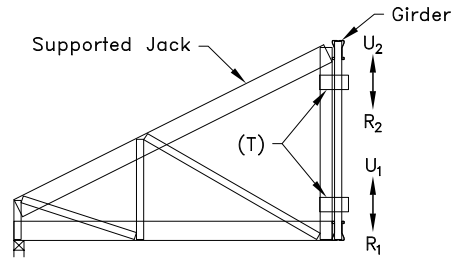


Partial Roof Layout

(T) = TTC; for 2 clip connection, place within 1" (25mm) of top and bottom as shown. For 1 clip connection, place within 1" (25mm) of bottom chord, or as analyzed. Bend clip to fit.



$$R = R_1 + R_2$$

$$U = U_1 + U_2$$

Typical Jack To Girder Connection

Allowable Values

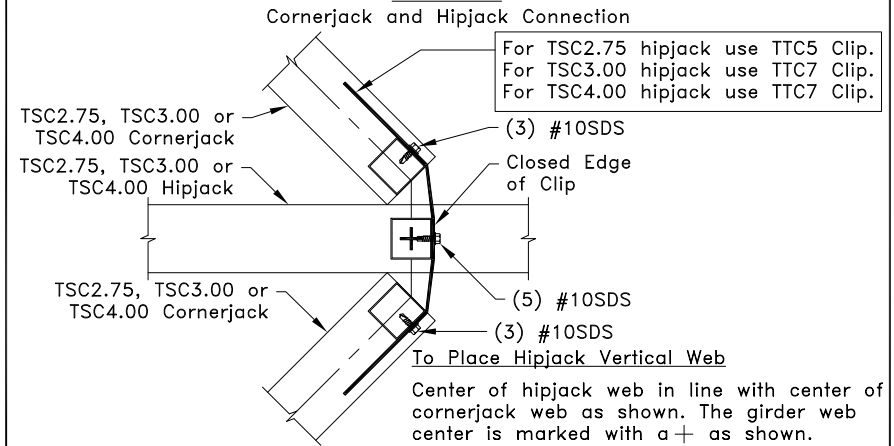
Supported Jack Type	Number of Clips	R = U lbs (kN)
Cornerjack	1 <sup>A</sup>	500 (2.22)
Cornerjack	2	1000 (4.44)
Hipjack	2	1235 (5.49)
Endjack	2	1235 (5.49)

A. (1) Clip may be used when supported truss height is less than 48" (1219mm).

General Notes:

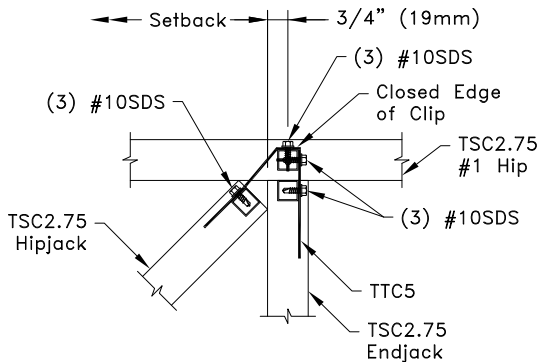
- The top and bottom chords of all trusses shall be properly connected to structural sheathing or purlins.
- If supported truss or girder web is a Z-web, refer to TS068 for connection areas.
- SDS = Self-Drilling Tapping Screw. Screw spacing, edge distance and end distance is 9/16" (14mm) minimum.
- Truss must be analyzed with concentrated loads directly in line with correctly placed girder vertical webs. Details A, B1, B2, & B3 give correct web placement information.
- For multi-ply #1 Hips, refer to Standard Detail TS025D for ply to ply connection requirements.
- Girder web shall not be a C-Web.
- Cold-Formed Steel Calculations are per the AISI 2016 "North American Specifications for the Design of Cold-Formed Steel Structural Members" (S100-16).

Detail A



Detail B1

TSC2.75 Into TSC2.75 Connection

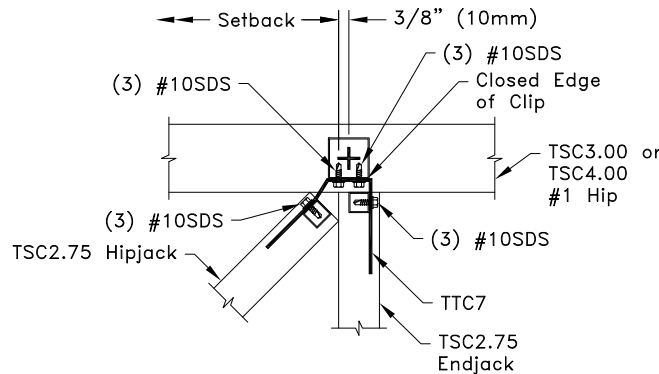


To Place #1 Hip Vertical Web

Edge of #1 hip web in line with edge of endjack web as shown. The girder web center is marked with a + as shown.

Detail B2

TSC2.75 Into TSC3.00 or TSC4.00 Connection

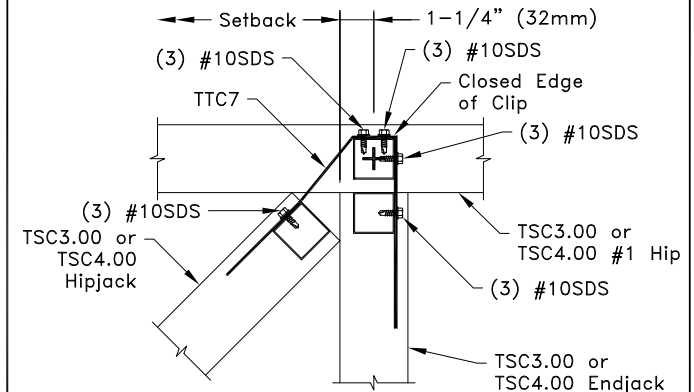


To Place #1 Hip Vertical Web

Edge of #1 hip web in line with edge of endjack web as shown. The girder web center is marked with a + as shown.

Detail B3

TSC3.00 or TSC4.00 Into TSC3.00 or TSC4.00 Connection



To Place #1 Hip Vertical Web

Edge of #1 hip web in line with edge of endjack web as shown. The girder web center is marked with a + as shown.



www.TrusSteel.com

Florida: 6750 Forum Drive, Suite 305 / Orlando, FL 32821 / (800) 755-6001  
 Missouri: 13723 Riverport Drive, Suite 200 / Maryland Heights, MO 63043 / (800) 326-4102

45° Hipjack, Endjack And Cornerjack Connection Details

Alpine, a division of ITW Building Components Group, Inc. shall not be responsible for any performance failure in a connection due to a deviation from this detail. Any variation from this detail shall be approved in advance by Alpine, a division of ITW Building Components Group, Inc.

Standard Detail:

TS025

Date:

10/11/18

TrusSteel Detail Category:

Truss-To-Truss Connections