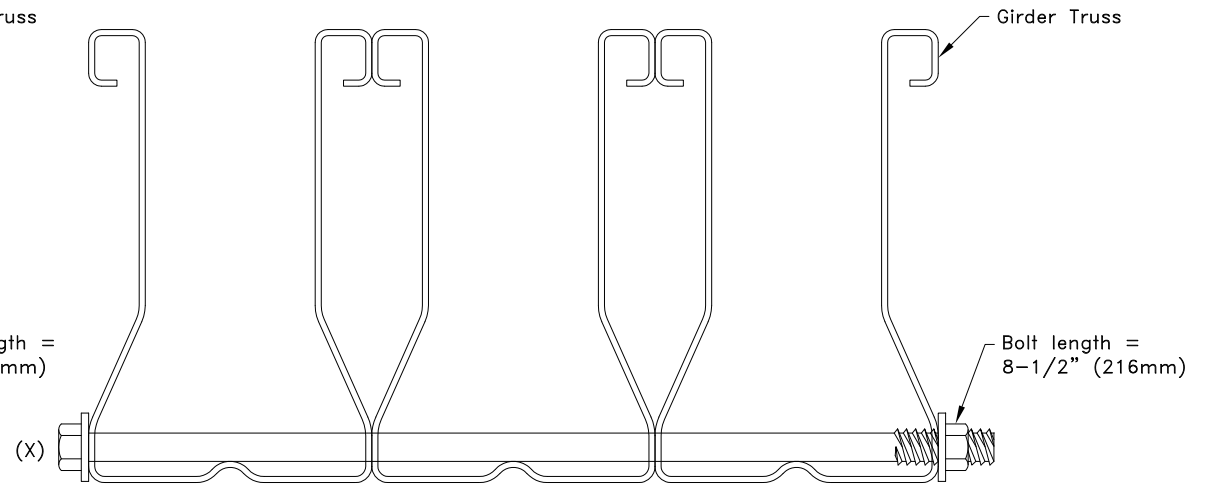


TSC3.00 or TSC4.00 2-Ply Connection



TSC3.00 or TSC4.00 3-Ply Connection

X Denotes Number Of Bolts To Be Applied At Each Hanger Location	
X = Number of required bolts	Maximum Reaction R and Uplift U from Supported Truss lbs (kN)
1	660 (2.94)
2	1310 (5.83)
3	1360 (6.05)

General Notes:

1. If more than one bolt is required, spacing and end distance of bolts = 1" (25mm).
2. Bolted connection shown to be applied within 12" (305mm) of the supported truss.
3. Bolt(s) shall not be located at a panel point.
4. Bolts(X) = ASTM A307 Grade A 1/4" (6mm) thru bolt with washer under head and nut.
5. Holes for bolt must be pre-drilled - diameter = 9/32" (7mm).
6. Cold-Formed Steel Calculations are per the AISI 2016 "North American Specifications for the Design of Cold-Formed Steel Structural Members" (S100-16).



www.TrusSteel.com

Florida: 6750 Forum Drive, Suite 305 / Orlando, FL 32821 / (800) 755-6001
 Missouri: 13723 Riverport Drive, Suite 200 / Maryland Heights, MO 63043 / (800) 326-4102

TSC3.00 or TSC4.00 Ply-To-Ply Connections Using Bolts When Hangers Are Used To Support Trusses

Alpine, a division of ITW Building Components Group, Inc. shall not be responsible for any performance failure in a connection due to a deviation from this detail. Any variation from this detail shall be approved in advance by Alpine, a division of ITW Building Components Group, Inc.

Standard Detail:
TS024

Date:
10/11/18

TrusSteel Detail Category:
Ply-To-Ply Connections