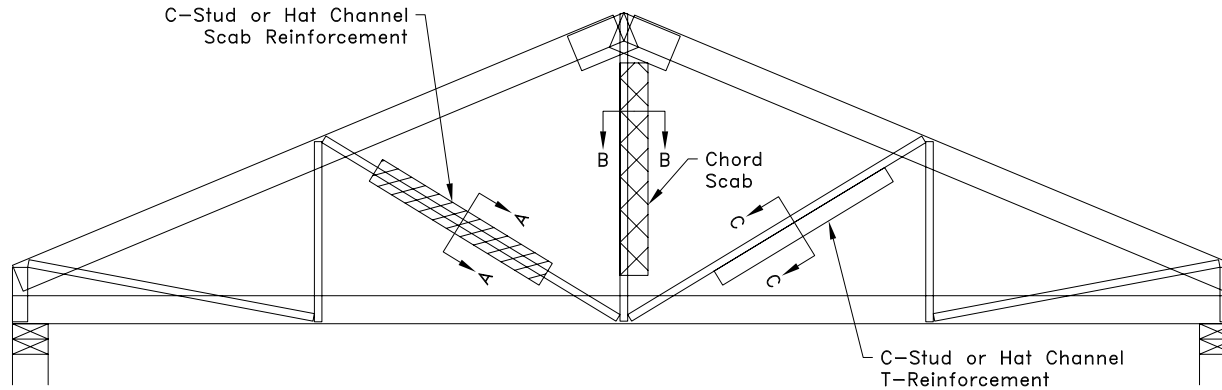
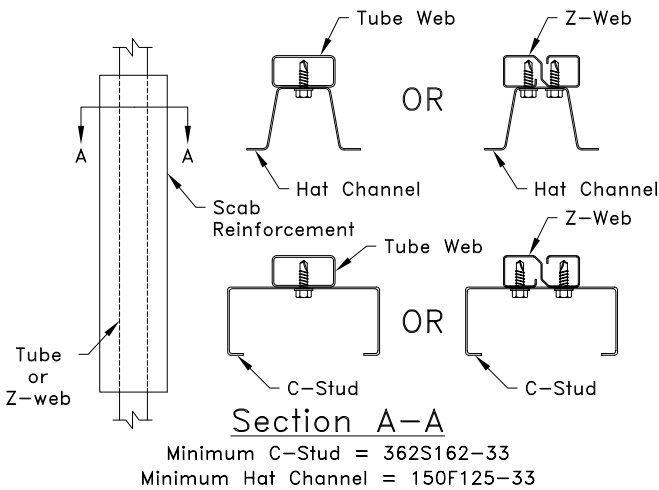


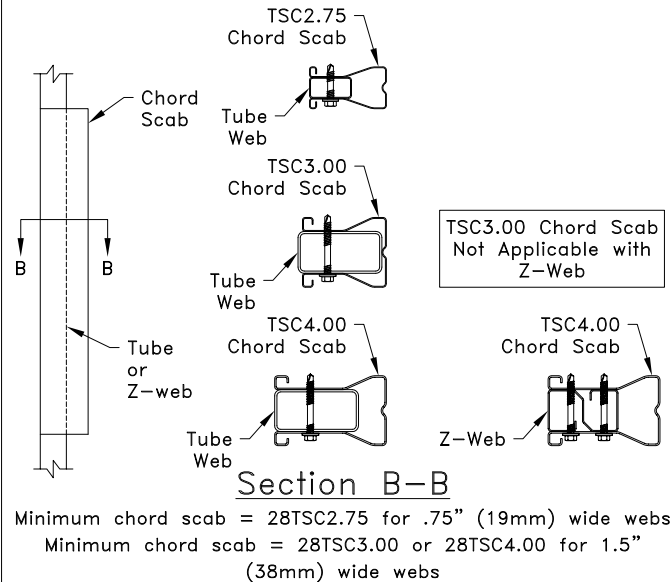
Different Types of Web Reinforcements Shown on TrusSteel Drawings



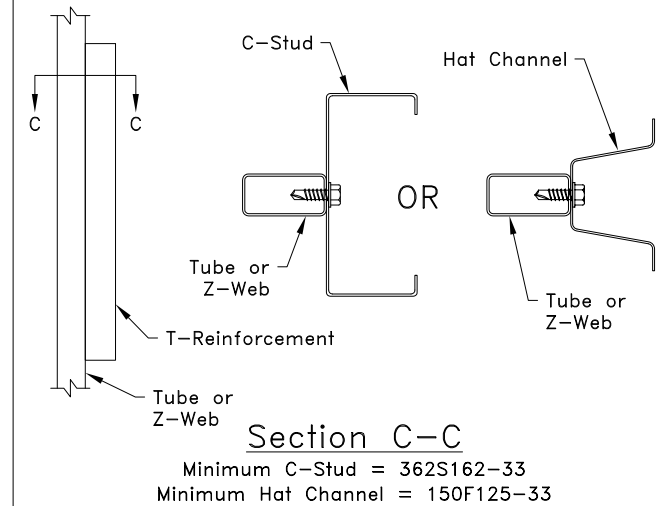
C-Stud or Hat Channel Scab Reinforcement



Chord Scab



C-Stud or Hat Channel T-Reinforcement



NOTICE

The details on this page are generic installation guides only. See approved truss drawings for specific reinforcement material, size and connection requirements per ply. Web reinforcements called out on the approved truss drawings shall NOT be substituted for a different reinforcement type unless approved by a TrusSteel engineer.



www.TrusSteel.com

Florida: 6750 Forum Drive, Suite 305 / Orlando, FL 32821 / (800) 755-6001
Missouri: 13723 Riverport Drive, Suite 200 / Maryland Heights, MO 63043 / (800) 326-4102

General Web Reinforcement Guidelines

Alpine, a division of ITW Building Components Group, Inc. shall not be responsible for any performance failure in a connection due to a deviation from this detail. Any variation from this detail shall be approved in advance by Alpine, a division of ITW Building Components Group, Inc.

Standard Detail:

TS019

Date:

10/11/18

TrusSteel Detail Category:

Reinforcement