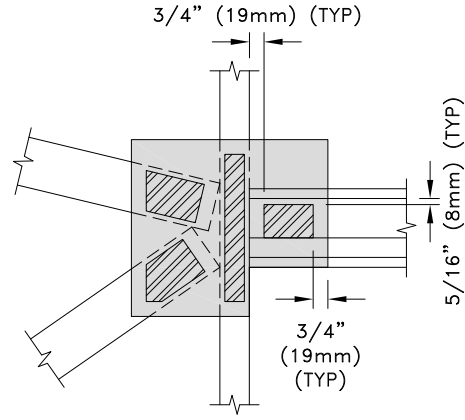
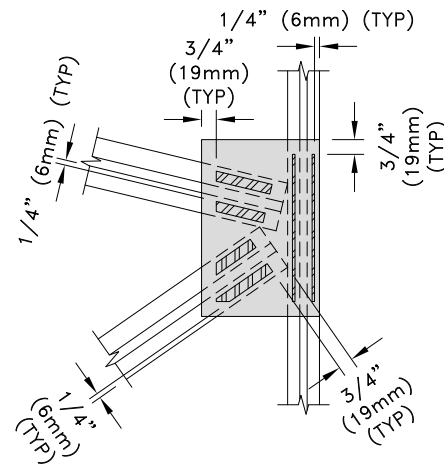


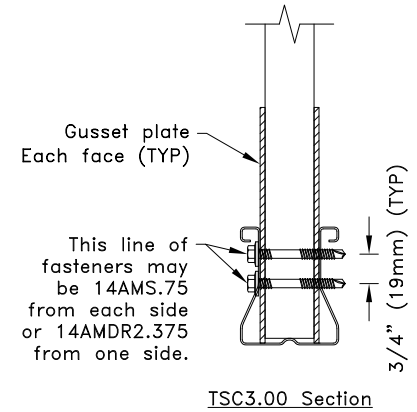
**K-Web Fastener Area For  
Tube Webs Without Chord**



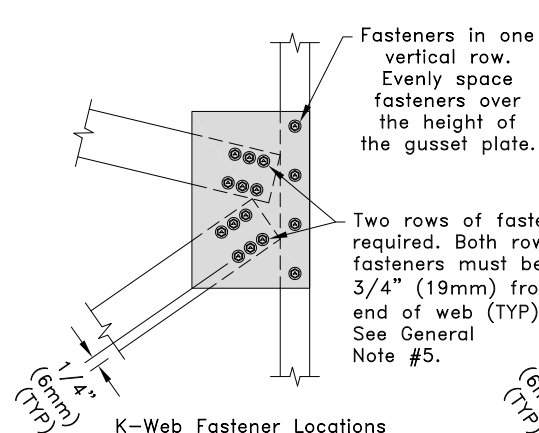
**K-Web Fastener Area For  
Tube Webs With Chord**



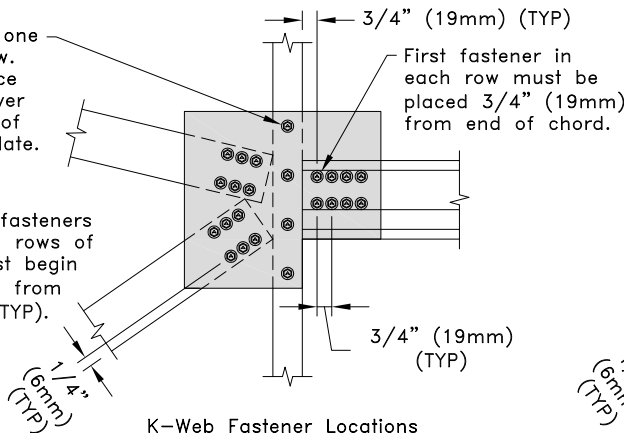
**K-Web Fastener Area For  
Z-Webs Without Chord**



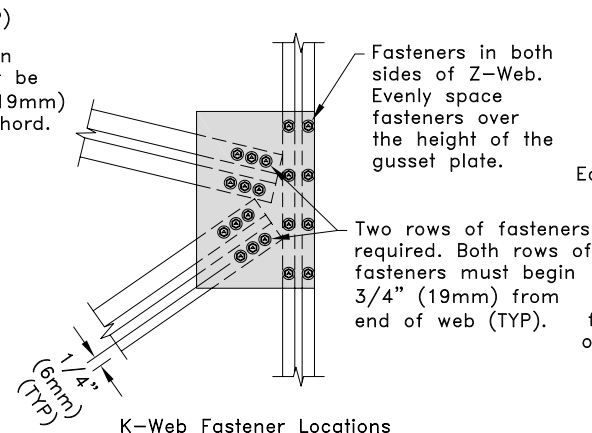
**TSC3.00 Section**



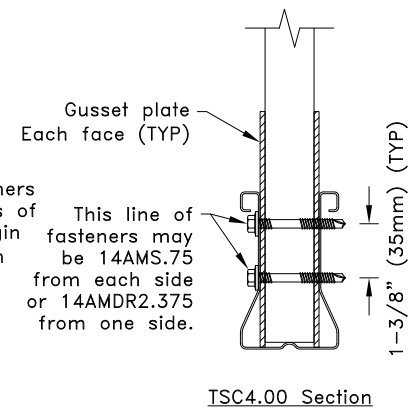
**K-Web Fastener Locations  
For Tube Webs Without Chord**



**K-Web Fastener Locations  
For Tube Webs With Chord**



**K-Web Fastener Locations  
For Z-Webs Without Chord**



**TSC4.00 Section**

**General Notes:**

1. Fastener spacing and end distance is 3/4" (19mm) minimum except as shown.
2. Refer to approved truss drawing for gusset size, gauge and grade.
3. Refer to approved truss drawings for required fastener type and quantities for each member connected to gusset plate.
4. If K-Web diagonals are 3/4" (19mm) wide, one row of fasteners is adequate.
5. If any web is 3-1/2" (89mm) wide three rows of fasteners are allowed.
6. = Fastener contact area.

**ALPINE TrusSteel™**

[www.TrusSteel.com](http://www.TrusSteel.com)

**TSC3.00 or TSC4.00  
Gusset Plate Fastener  
Placement**

Alpine, a division of ITW Building Components Group, Inc. shall not be responsible for any performance failure in a connection due to a deviation from this detail. Any variation from this detail shall be approved in advance by Alpine, a division of ITW Building Components Group, Inc.

**Standard Detail:**  
TS016G  
**Date:**  
10/11/18

**TrusSteel Detail Category:**  
Pitch Break Connections

Florida: 6750 Forum Drive, Suite 305 / Orlando, FL 32821 / (800) 755-6001  
Missouri: 13723 Riverport Drive, Suite 200 / Maryland Heights, MO 63043 / (800) 326-4102