

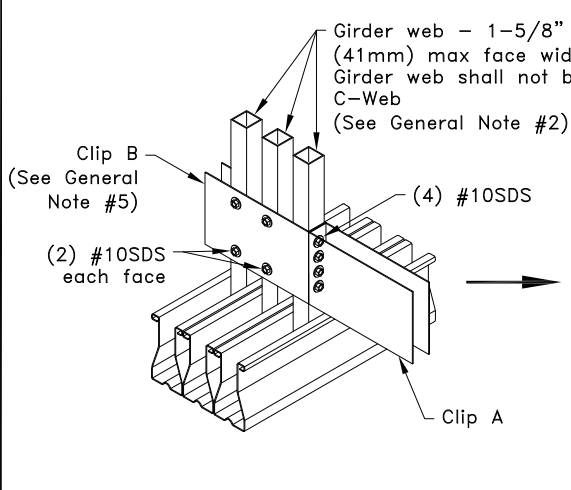
$$R = R_1 + R_2$$

$$U = U_1 + U_2$$

Typical Supported Truss to Girder Connection

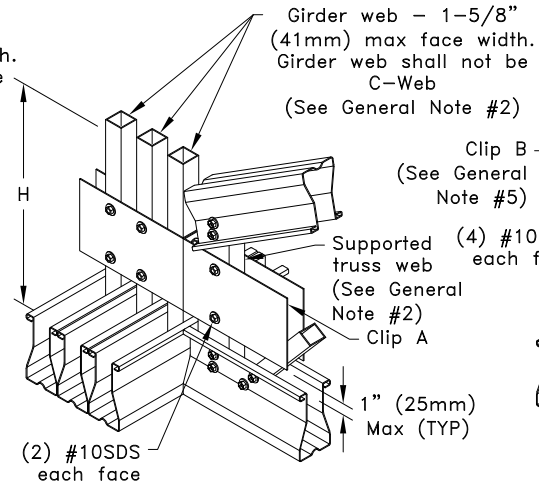
Supported Truss Chord Size	H _{min} in (mm) ^A	H _{max} in (mm) ^A	Number of "A" Clips	Clip "A" Size		R = U lbs (kN) ^A
				Girder web is tube web	Girder web is Z-web	
TSC2.75	9-1/2 (241)	48 (1219)	1	TTC5	NA	860 (3.83)
TSC3.00 or TSC4.00	12 (305)	48 (1219)	1	TTC7	TTC7	860 (3.83)
TSC2.75	19 (483)	no max limit	2	TTC5	NA	1720 (7.65)
TSC3.00 or TSC4.00	24 (610)	no max limit	2	TTC7	TTC7	1720 (7.65)

A. R = Allowable Reaction, U = Allowable Uplift and H = Heel height of supported truss.

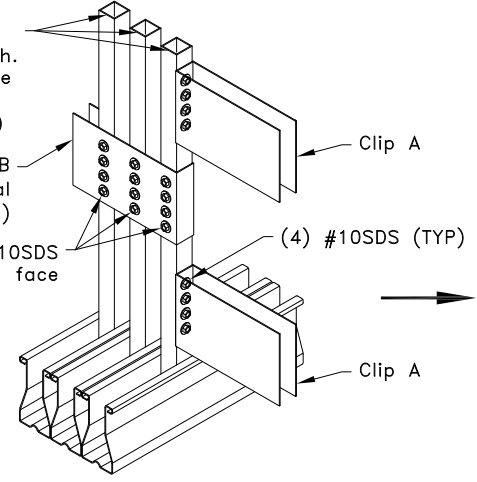


Initial Connection Of Clips To Girder Vertical Webs

SINGLE CLIP TRUSS TO TRUSS CONNECTION

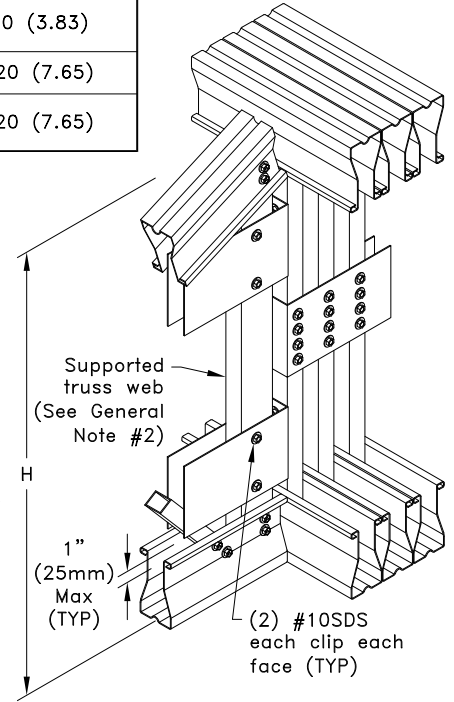


Connection of Supported Truss to Girder

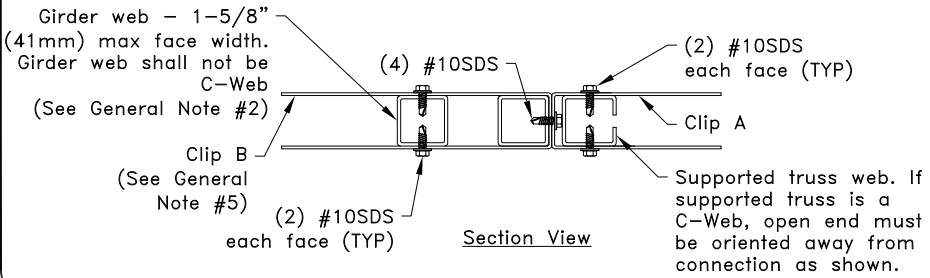


Initial Connection Of Clips To Girder Vertical Webs

DOUBLE CLIP TRUSS TO TRUSS CONNECTION



Connection of Supported Truss to Girder



Section View

General Notes:

1. The top and bottom chords of all trusses shall be properly connected to structural sheathing or purlins, designed by others.
2. If supported truss or girder web is a Z-web, refer to TS068 for connection areas.
3. SDS = Self-Drilling Tapping Screw. Screw spacing, edge distance and end distance is 9/16" (14mm) minimum.
4. The supported truss must be designed utilizing a clip bearing type. For 2 clip connections, place within 1" (25mm) of top and bottom chords as shown. For 1 clip connections, place within 1" (25mm) of bottom chord, or as analyzed.
5. Clip "B" is TTC5 when girder web is W.75x.75 and TTC7 when girder web is W.75x1.5, W1.5x1.5 or Z1.5x1.62. (If girder web is Z1.5x1.62, bend TTC7 to fit.)
6. Cold-Formed Steel Calculations are per the AISI 2016 "North American Specifications for the Design of Cold-Formed Steel Structural Members" (S100-16).

www.TrusSteel.com

Face Mounted Truss To Truss Connection

Using TTC Clips (3 Ply Girder)

Alpine, a division of ITW Building Components Group, Inc. shall not be responsible for any performance failure in a connection due to a deviation from this detail. Any variation from this detail shall be approved in advance by Alpine, a division of ITW Building Components Group, Inc.

Standard Detail:
TS001F
Date:
10/11/18

TrusSteel Detail Category:
Truss-To-Truss Connections

Florida: 6750 Forum Drive, Suite 305 / Orlando, FL 32821 / (800) 755-6001
Missouri: 13723 Riverport Drive, Suite 200 / Maryland Heights, MO 63043 / (800) 326-4102