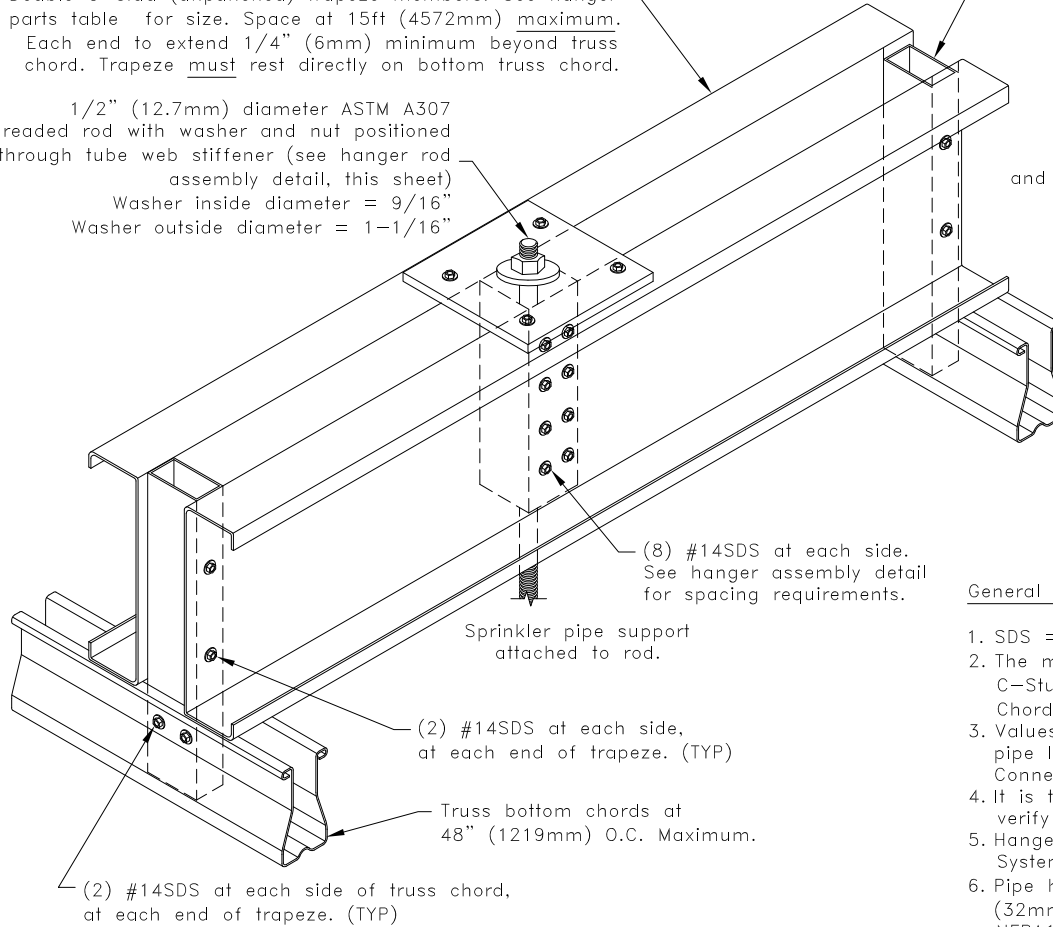


Hanger Parts Table		
Maximum Sprinkler Pipe Dia. 8 in. (203mm)		
Truss Chord Size	Trusses at 48" (1219mm) O.C.	
	Trapeze Member	Support Post
TSC2.75	(2) 600S162-54 <sup>A</sup>	TSW.75x1.5
TSC3.00 or TSC4.00	(2) 600S162-54 <sup>A</sup>	TSW1.5x1.5

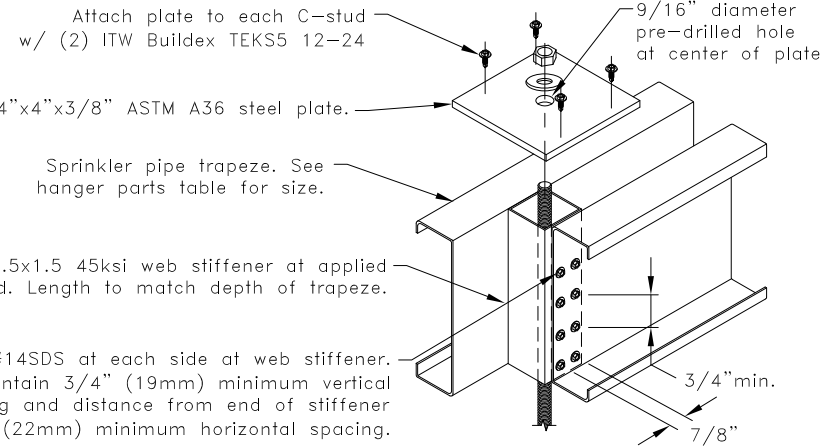
(A) Grade 50 steel required.

Double C-stud (unpunched) trapeze members. See hanger parts table for size. Space at 15ft (4572mm) maximum. Each end to extend 1/4" (6mm) minimum beyond truss chord. Trapeze must rest directly on bottom truss chord.

1/2" (12.7mm) diameter ASTM A307 threaded rod with washer and nut positioned through tube web stiffener (see hanger rod assembly detail, this sheet)  
Washer inside diameter = 9/16"  
Washer outside diameter = 1-1/16"



TS tube vertical support posts. See hanger parts table for size. Minimum length to match depth of truss chord plus C-stud. Existing truss web may be used as trapeze support post provided it has been designed to support the load.



### Hanger Rod Assembly Detail

Note: Multiply above units by 25.4 for millimeters.

Sprinkler Pipe Diameter & Hanger Load	
Sprinkler Pipe Diameter in. (mm)	Maximum Hanger Load lbs. (kN) <sup>B</sup>
6 (152)	2630 (11.70)
8 (203)	4060 (18.06)

(B) Values given are based on 15' (4572mm) maximum hanger spacing.

#### General Notes:

1. SDS = self-drilling tapping screw. Screw spacing, end and edge distance is 3/4" (19mm) min.
2. The minimum yield strengths of materials are as follows (unless otherwise noted): C-Stud Trapeze = 33ksi (228 MPa), Tube steel support posts = 45ksi (310 MPa), TrusSteel Chords = 55ksi (379 MPa).
3. Values shown are for the sprinkler pipe hanger only. Truss must be properly loaded for sprinkler pipe load. Refer to TrusSteel Technical Bulletin TB00.09.01, "Sprinkler Pipes - Truss Loading & Connections".
4. It is the responsibility of the architect or engineer of record to review this hanger design to verify it conforms with the overall sprinkler system support design.
5. Hanger loads were determined per NFPA13 "Standard For The Installation Of Sprinkler Systems" and assume schedule 40 steel pipe.
6. Pipe hanger spacing not to exceed 12' (3658mm) for pipes up to and including 1-1/4" (32mm) diameter and 15' (4572mm) for pipes greater than 1-1/4" (32mm) diameter per NFPA13 1999.
7. Nut shall be grade A, HEX conforming to ASTM A563 and Washer shall conform to ASTM F436.
8. Cold-Formed Steel Calculations are per the 2010 supplement to the AISI 2007 "North American Specifications for the Design of Cold-Formed Steel Structural Members" (S100-07/S2-10).

**TrusSteel**<sup>®</sup>

www.TrusSteel.com

Florida: 1950 Marley Drive / Haines City, FL 33844 / (800) 755-6001  
Missouri: 13389 Lakefront Drive / Earth City, MO 63045 / (800) 326-4102

**Double C-Stud Sprinkler  
Trapeze at Bottom Chord for  
8" (203mm) Max. Diameter Pipe**

ITW Building Components Group, Inc. shall not be responsible for any performance failure in a connection due to a deviation from this detail. Any variation from this detail shall be approved in advance by ITW Building Components Group, Inc.

**Standard Detail:**

**TS049I**

**Date:**

**07/16/12**

**TrusSteel Detail Category:**

**Bottom Chord Sprinkler Hanger**