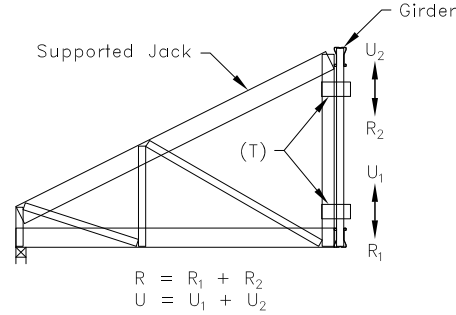


Partial Roof Layout

(T) = TTC; for 2 clip connection, place within 1" of top and bottom as shown. For 1 clip connection, place within 1" of bottom chord, or as analyzed. Bend clip to fit.



Typical Jack To Girder Connection

Allowable Values

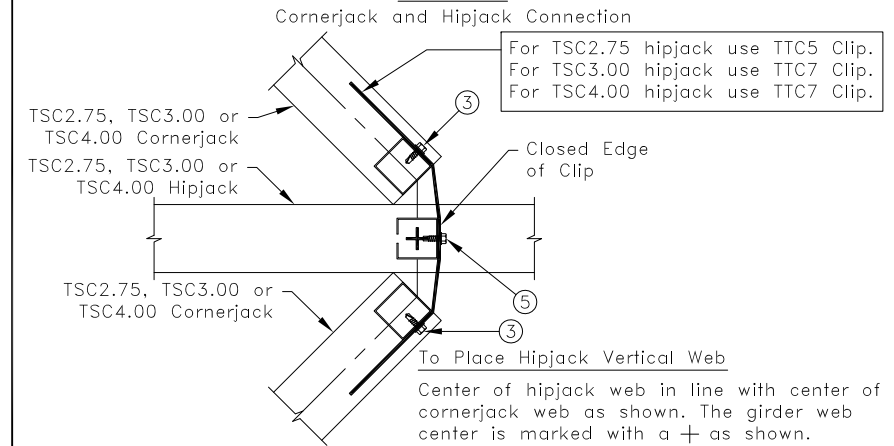
Supported Jack Type	Number of Clips	R = U lbs (kN)
Cornerjack	1 ^A	500 (2.22)
Cornerjack	2	1000 (4.44)
Hipjack	2	1235 (5.49)
Endjack	2	1235 (5.49)

A. (1) Clip may be used when supported truss height is less than 48" (1219mm).

General Notes:

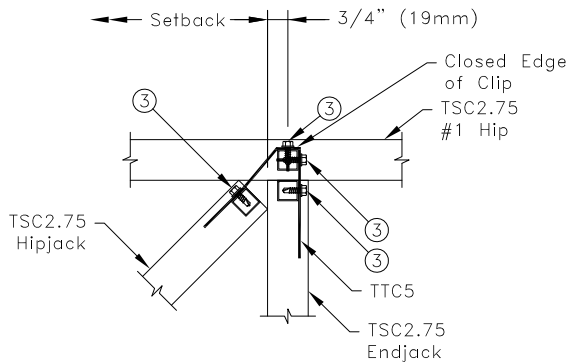
1. The top and bottom chords of all trusses shall be properly connected to structural sheathing or purlins.
2. If supported truss or girder web is a Z-web, refer to TS068 for connection areas.
3. All end distances, edge distances and spacing are 9/16" (14mm) minimum.
4. Circled numbers represent quantity of #10 self-drilling tapping screws per clip
5. Truss must be analyzed with concentrated loads directly in line with correctly placed girder vertical webs. Details A, B1, B2, & B3 give correct web placement information.
6. For multi-ply #1 Hips, refer to Standard Detail TS025D for ply to ply connection requirements.
7. If girder web is a C-Web, screws shall not be applied to open face. Position girder webs as shown in details.
8. Cold-Formed Steel Calculations are per the 2010 supplement to the AISI 2007 "North American Specifications for the Design of Cold-Formed Steel Structural Members" (S100-07/S2-10).

Detail A



Detail B1

TSC2.75 Into TSC2.75 Connection

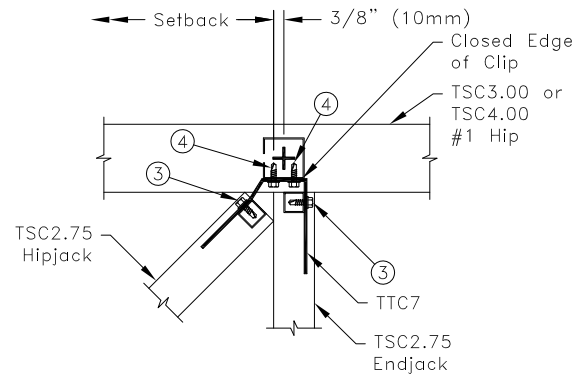


To Place #1 Hip Vertical Web

Edge of #1 hip web in line with edge of endjack web as shown. The girder web center is marked with a + as shown.

Detail B2

TSC2.75 Into TSC3.00 or TSC4.00 Connection

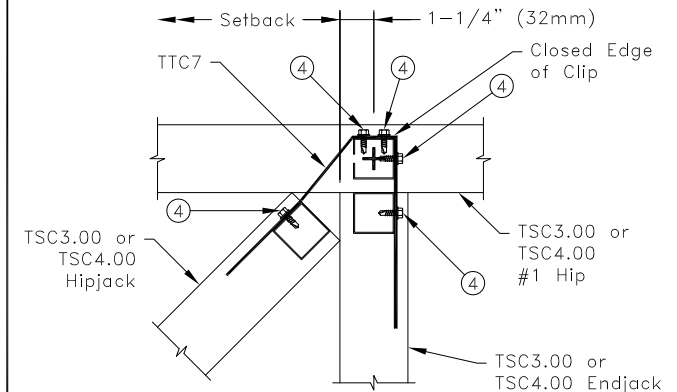


To Place #1 Hip Vertical Web

Edge of #1 hip web in line with edge of endjack web as shown. The girder web center is marked with a + as shown.

Detail B3

TSC3.00 or TSC4.00 Into TSC3.00 or TSC4.00 Connection



To Place #1 Hip Vertical Web

Edge of #1 hip web in line with edge of endjack web as shown. The girder web center is marked with a + as shown.

TrusSteel[®]

www.TrusSteel.com

45° Hipjack, Endjack And Cornerjack Connection Details

ITW Building Components Group, Inc. shall not be responsible for any performance failure in a connection due to a deviation from this detail. Any variation from this detail shall be approved in advance by ITW Building Components Group, Inc.

Standard Detail:
TS025

Date:
07/16/12

TrusSteel Detail Category:
Truss-To-Truss Connections

Florida: 1950 Marley Drive / Haines City, FL 33844 / (800) 755-6001
Missouri: 13389 Lakefront Drive / Earth City, MO 63045 / (800) 326-4102