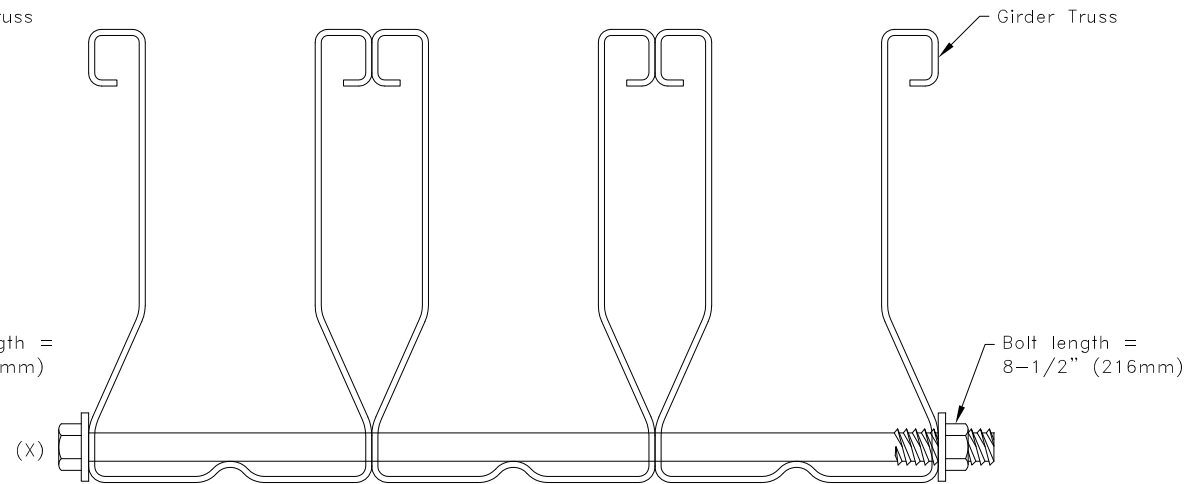


TSC3.00 or TSC4.00 2-Ply Connection



TSC3.00 or TSC4.00 3-Ply Connection

X Denotes Number Of Bolts To Be Applied At Each Hanger Location	
X = Number of required bolts	Maximum Reaction R and Uplift U from Supported Truss lbs (kN)
1	660 (2.94)
2	1310 (5.83)
3	1360 (6.05)

General Notes:

1. If more than one bolt is required, spacing and end distance of bolts = 1" (25mm).
2. Bolted connection shown to be applied within 12" (305mm) of the supported truss.
3. Bolt(s) shall not be located at a panel point.
4. Bolts(X) = ASTM A307 Grade A 1/4" (6mm) thru bolt with washer under head and nut.
5. Holes for bolt must be pre-drilled - diameter = 9/32" (7mm).
6. Cold-Formed Steel Calculations are per the 2010 supplement to the AISI 2007 "North American Specifications for the Design of Cold-Formed Steel Structural Members" (S100-07/S2-10).

TrusSteel[®]

www.TrusSteel.com

Florida: 1950 Marley Drive / Haines City, FL 33844 / (800) 755-6001
 Missouri: 13389 Lakefront Drive / Earth City, MO 63045 / (800) 326-4102

TSC3.00 or TSC4.00 Ply-To-Ply Connections Using Bolts When Hangers Are Used To Support Trusses

ITW Building Components Group, Inc. shall not be responsible for any performance failure in a connection due to a deviation from this detail. Any variation from this detail shall be approved in advance by ITW Building Components Group, Inc.

Standard Detail:
TS024

Date:
07/16/12

TrusSteel Detail Category:
 Ply-To-Ply Connections